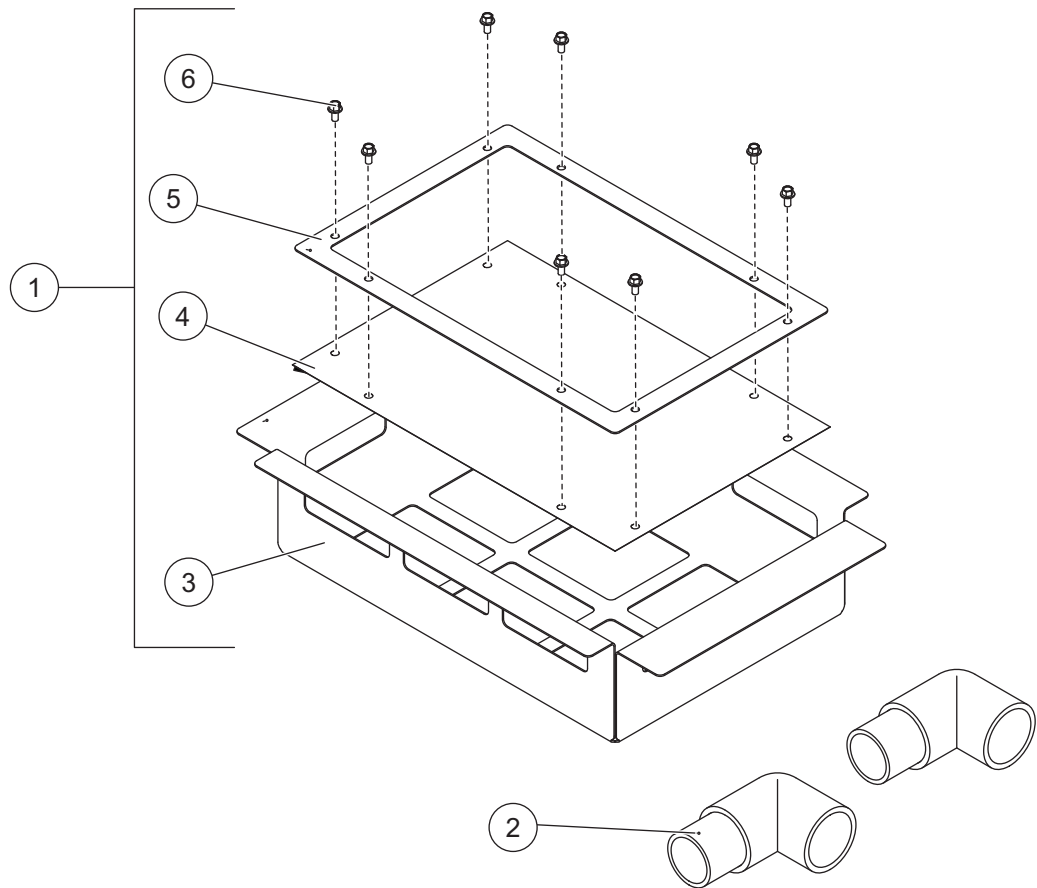


Rear Tank Strainer Kit

Brine Pro™ 2000 Brine Maker



11263 Rear Tank Strainer Kit							
Item	Part	Qty	Description	Item	Part	Qty	Description
1	11262	1	Rear Tank Strainer	2	57279	2	2" Discharge Tube
Item 1				11262 Rear Tank Strainer			
3		1	Rear Tank Strainer	5		1	Strainer Washer Plate
4		1	Mesh Strainer Panel	6		8	1/4-20 x 1/2 Serrated Flange Cap Screw SS
SS = Stainless Steel							

INSTALLATION INSTRUCTIONS

⚠ CAUTION

Read this document before installing the Rear Tank Strainer Kit.

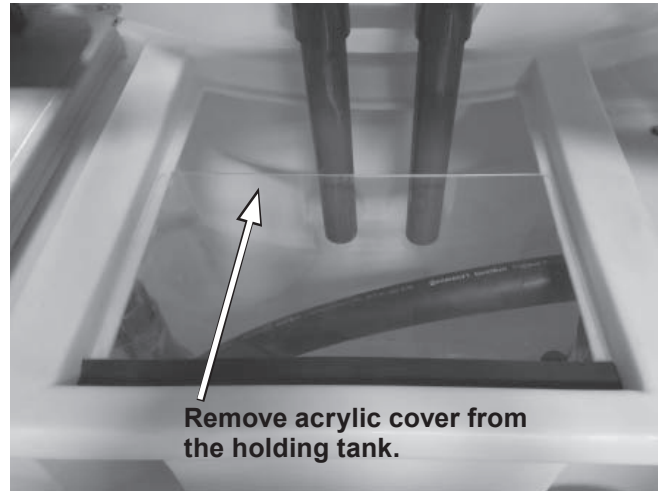
⚠ CAUTION

Use standard methods and practices when installing accessories, including proper personal protective safety equipment.

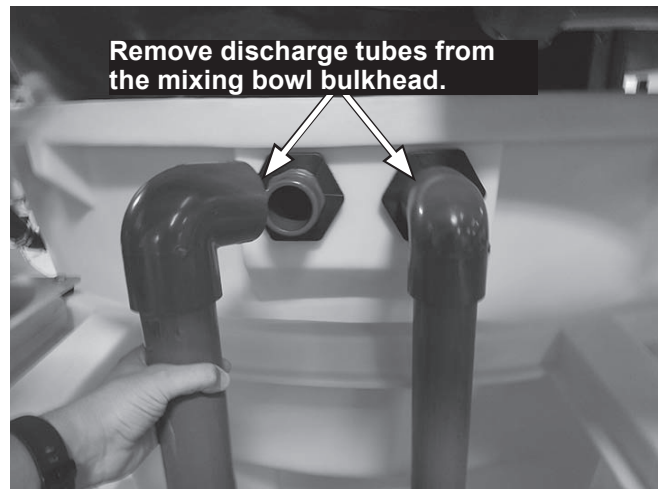
To protect the circulation pump motor, a Brine Pro™ Splash Guard Kit (P/N 11706) is required. If the machine is run without the splash guard kit and without the strainer installed, brine can splash onto the circulation pump causing damage.

1. Turn OFF Brine Pro™ brine maker.
2. Always shut off and lock out the power source before servicing.

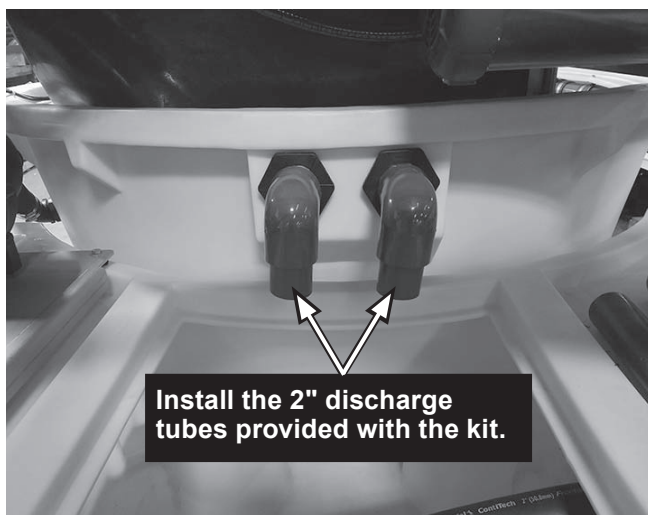
3. Remove the acrylic cover from the holding tank at the rear of the machine.



4. Remove the discharge tubes by pulling each elbow and pipe assembly from the mixing bowl bulkheads. Retain the tubes to be reinstalled when the strainer is not in use.



5. Install the new 2" discharge tubes provided with this kit.



6. Install strainer as shown below.



7. Install the Brine Pro™ Splash Guard Kit following the instructions provided in the kit.

OPERATING INSTRUCTIONS

Overview

The strainer will collect debris from the brine as it spills from the mixing tank to the holding tank, reducing the amount of particulate that ends up in the finished brine. This reduces the frequency of clean out required for the holding tank, external storage tanks, and spray equipment.

Strainer Maintenance

1. The frequency of strainer maintenance will depend upon the amount of debris in the salt supply. Using good quality, clean salt will reduce the frequency of maintenance. It is recommended to check the strainer every time the salt hopper is refilled.
2. Once the strainer is full, unstrained brine will spill from the overflow slots into the holding tank. This is an indicator that the strainer should be cleaned out.
3. The strainer may be cleaned by removing it from the rear of the machine and dumping the debris into an appropriate container to be disposed of in accordance with local ordinances. When removing the strainer from the machine, slide it toward you before lifting. Alternatively, a **PLASTIC** scoop may be used to remove debris from the strainer. If using this method, take care not to damage the strainer mesh.

Mesh Customization

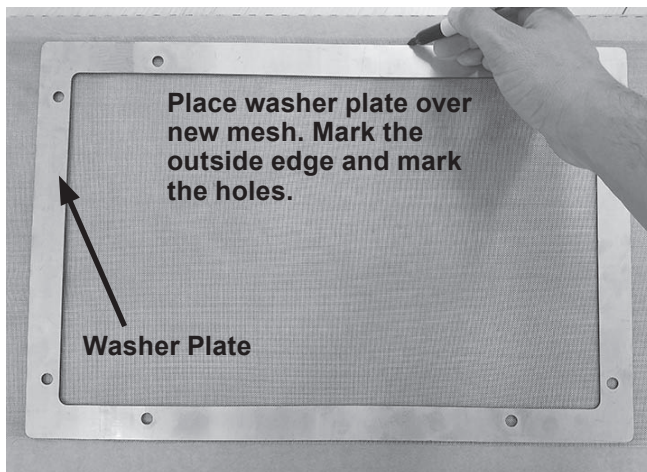
The stainless steel mesh that is provided with the strainer was chosen to balance frequency of clean out with the amount of debris collected. If desired, you can customize the mesh size for your salt quality.

If you find that the strainer is not catching as much debris as you would like, you can purchase, cut and install a finer mesh.

NOTE: Using a finer mesh will likely result in more frequent strainer maintenance.

To cut a custom mesh:

1. Order **stainless steel** wire mesh with the desired mesh size from an appropriate supplier. Note that the strainer panel is 12" x 18". Be sure to order enough material.
2. Once the new mesh has arrived, remove the eight 1/4" x 1/2" serrated flange cap screws, mesh panel, and washer plate from the strainer.
3. Use the washer plate as a template for cutting the custom mesh. Place the washer plate over the new mesh and mark around the outside edge for the overall size, and mark the holes for proper alignment.

**⚠ CAUTION**

Do NOT attempt to drill the holes in the wire mesh. Doing so may result in injury.

4. Cut the mesh to proper size and punch the appropriate holes as marked. Mesh that is finer than the factory mesh can typically be cut with scissors.
5. Reinstall the new mesh, washer plate, and cap screws into the strainer assembly.
6. Reinstall the strainer into the Brine Pro™ brine maker. When first using the newly installed strainer mesh, be sure to observe how quickly the strainer fills. Using a finer mesh will likely result in more frequent strainer maintenance.

TrynEx International, LLC, reserves the right under its product improvement policy to change construction or design details and furnish equipment when so altered without reference to illustrations or specifications used. TrynEx International, LLC, or the vehicle manufacturer may require or recommend optional equipment for brine making. TrynEx International, LLC, offers a limited warranty for all brine makers and accessories. See separately printed page for this important information. The following are registered (®) or unregistered (™) trademarks of Douglas Dynamics, LLC: Brine Pro™, SnowEx®.

Printed in U.S.A.