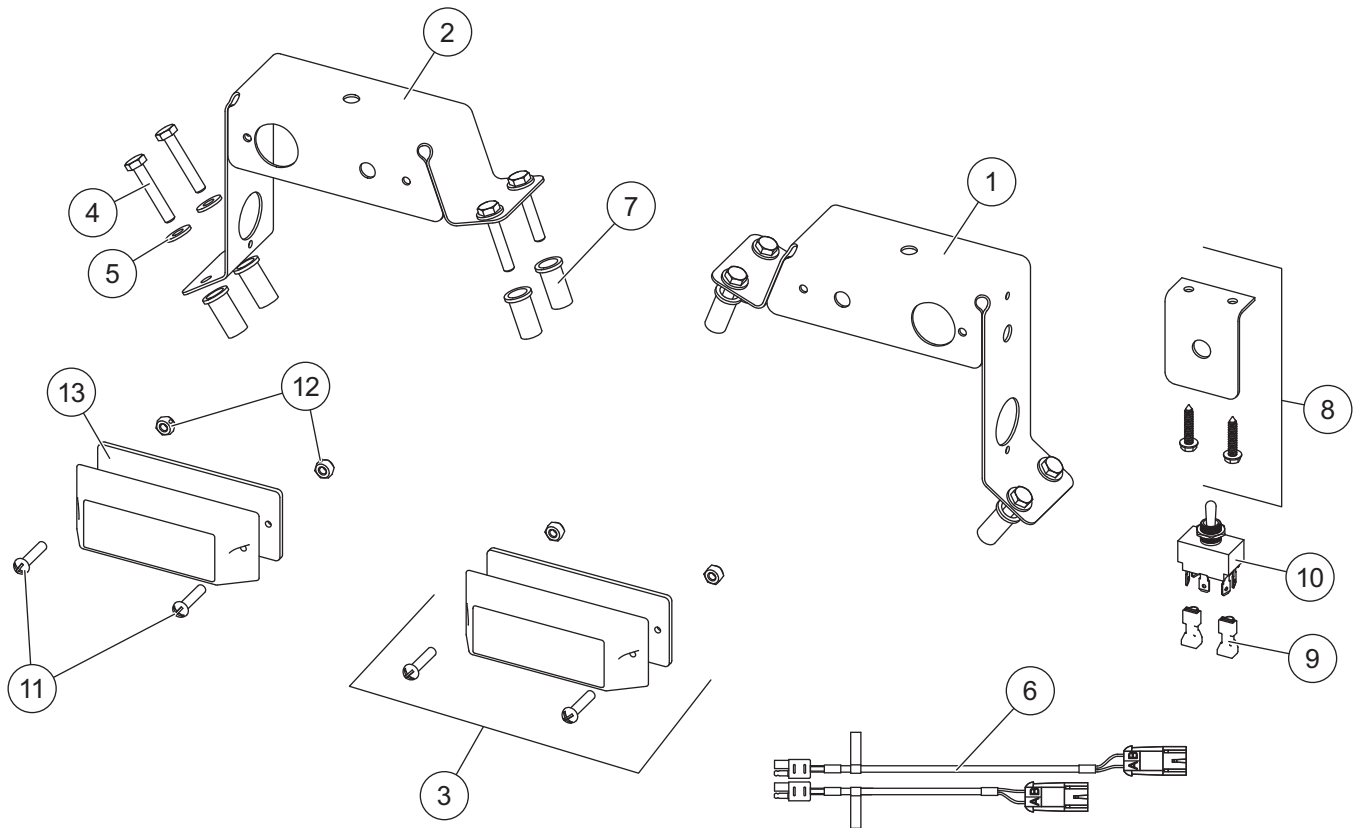


Strobe Light Kit

HFD Liqui Maxx™ Sprayer Systems

PARTS LIST



| 72158 Strobe Kit | | | | | | | |
|------------------|-------|--------------------------|---------------------------------|------|-------|-----|-------------------------|
| Item | Part | Qty | Description | Item | Part | Qty | Description |
| 1 | | 1 | Strobe Bracket – PS | 6 | 78386 | 1 | Harness Assembly – 72" |
| 2 | | 1 | Strobe Bracket – DS | 7 | 78263 | 8 | 1/4-20 Wellnut |
| 3 | 78379 | 2 | Strobe Light – LED | 8 | 68297 | 1 | Switch Bracket Kit |
| 4 | | 8 | 1/4-20 x 1-1/2 Hex Cap Screw SS | 9 | | 2 | Spade Connector, Female |
| 5 | | 8 | 1/4 Flat Washer SS | 10 | 53845 | 1 | Toggle Switch DPDT |
| Item 3 | | 78379 Strobe Light – LED | | | | | |
| 11 | | 2 | 6-32 x 5/8 Machine Screw SS | 13 | | 1 | Strobe Light Gasket |
| 12 | | 2 | 6-32 Hex Locknut SS | | | | |

SS = Stainless Steel

INSTALLATION INSTRUCTIONS

⚠ WARNING

Do not exceed GVWR or GAWR ratings as found on the driver-side vehicle door cornerpost.

⚠ CAUTION

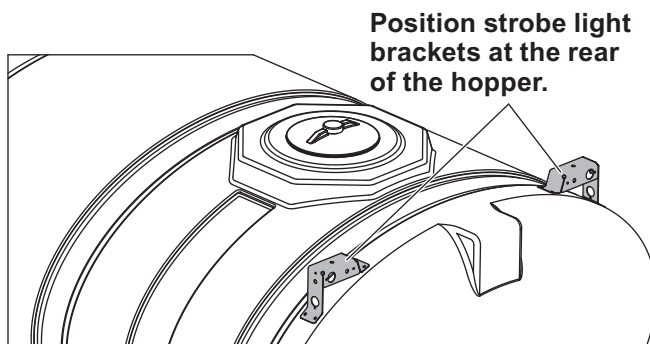
Read this document before installing the strobe lights.

⚠ CAUTION

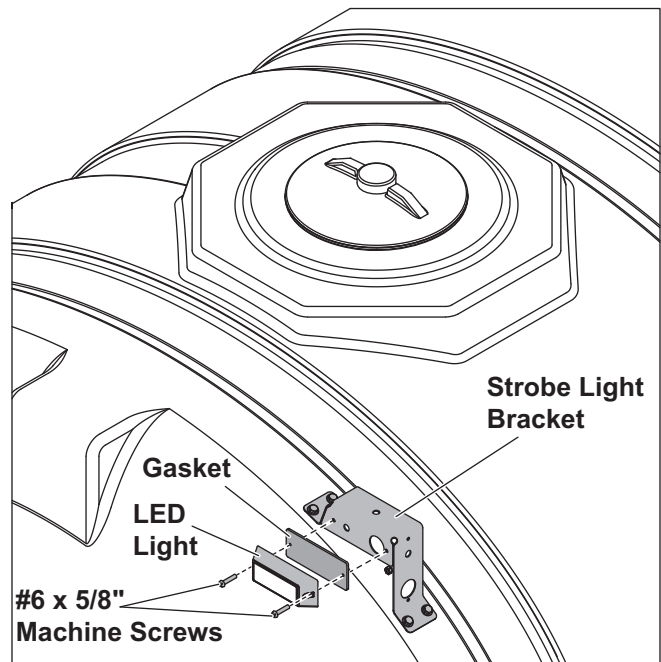
Use standard methods and practices when attaching spreader and installing accessories, including proper personal protective safety equipment.

Install Brackets and Lights

1. Park the vehicle on a smooth, level, hard surface, such as concrete. Turn the vehicle ignition to the "OFF" position and remove the key.
2. Position the passenger-side strobe light brackets at the rear of the hopper as shown, ensuring that the brackets sit level and square. Depending on the size of the tank, the brackets may sit ahead of or behind the tank strap.

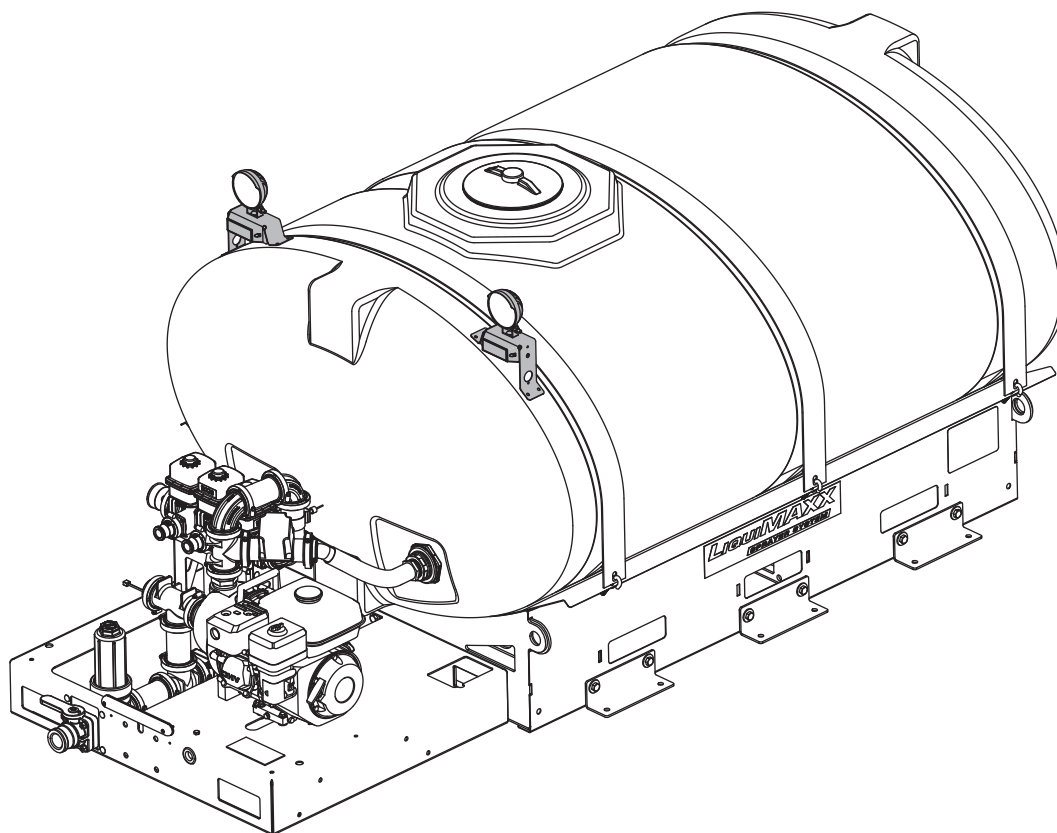
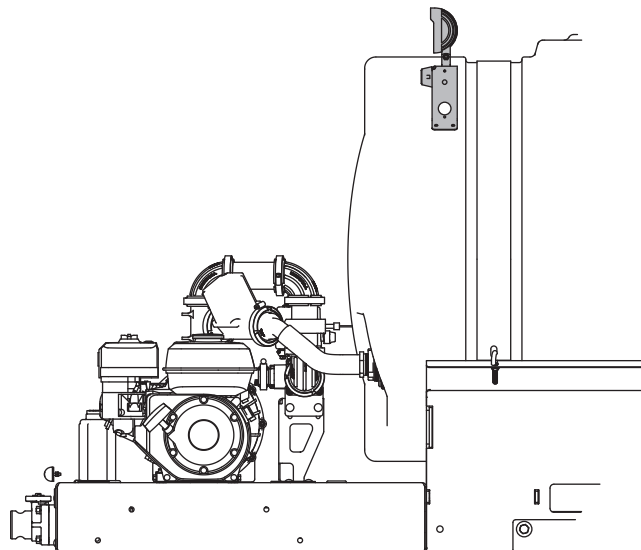
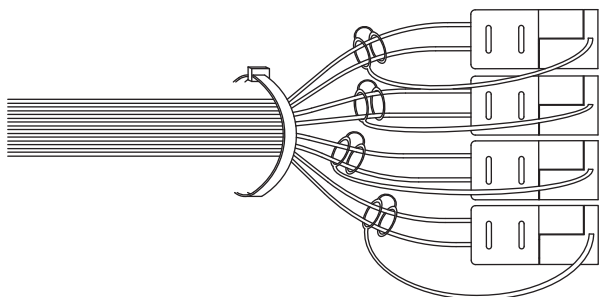


3. Using the bracket as a template, mark the location of the four bracket mounting holes on the hopper. Drill mounting holes using a 1/2" drill bit.
4. Install the bracket to the hopper using the supplied rubber wellnuts, 1/4" cap screws, and washers. Apply thread sealant to the 1/4" screws before installing.
5. Repeat Steps 2–4 for the driver-side bracket.
6. Feed the electrical connector and leads from one of the LED strobe lights through the large hole in one of the brackets. Install the LED light and gasket to the bracket using the supplied #6 x 5/8" machine screws and #6 locknuts. Repeat with the other LED light and gasket.



Install Harness

1. Starting on the driver's side, connect one of the 72" harnesses to the strobe light. Route the harness along the tank strap, down to the pump platform, and through the large rectangular opening.
2. Locate the four accessory wiring connectors in the main sprayer harness assembly, located beneath the platform under the primary pump. Note the wire colors. One pair of connectors has gray and black wires; the other has white and black. Connect the primary work light accessory harness to one of the connectors with white and black wires.
3. Repeat Steps 1-2 for the passenger-side strobe light.
4. Secure the harnesses to the tank straps using the supplied cable ties. Coil any excess harness beneath the pump platform and secure using the supplied cable ties.



Strobe Light Operation

The strobe light comes with a pre-set flash pattern. In some instances, it is possible for this default pattern to change to a "Steady On" mode. Should this occur, the flash pattern can be changed to any of 11 flash patterns.

1. Cut the wire seal off the yellow wire and strip 1/4" of insulation.
2. With the strobe ON, intermittently apply 12V from the vehicle power supply to the yellow wire until the strobe achieves the desired flash pattern:

| MODE | PATTERN |
|------|---------------------|
| 0 | Random |
| 1 | Steady |
| 2 | Single |
| 3 | Mega |
| 4 | Double |
| 5 | Triple |
| 6 | Quad |
| 7 | Quint |
| 8 | 8 Flash |
| 9 | Single-Quad |
| 10 | Single H/L |
| 11 | Single-Triple-Quint |

3. Reseal the yellow wire.

NOTE: The white wire is not used.

Copyright © 2017 Douglas Dynamics, LLC. All rights reserved. This material may not be reproduced or copied, in whole or in part, in any printed, mechanical, electronic, film or other distribution and storage media, without the written consent of the company. Authorization to photocopy items for internal or personal use by the company's outlets or spreader owner is granted.

The company reserves the right under its product improvement policy to change construction or design details and furnish equipment when so altered without reference to illustrations or specifications used. This equipment manufacturer or the vehicle manufacturer may require or recommend optional equipment for spreaders. Do not exceed vehicle ratings with a spreader. The company offers a limited warranty for all spreaders and accessories. See separately printed page for this important information. The following is an unregistered (™) trademark of Douglas Dynamics, LLC: Liqui Maxx™.

Printed in U.S.A.