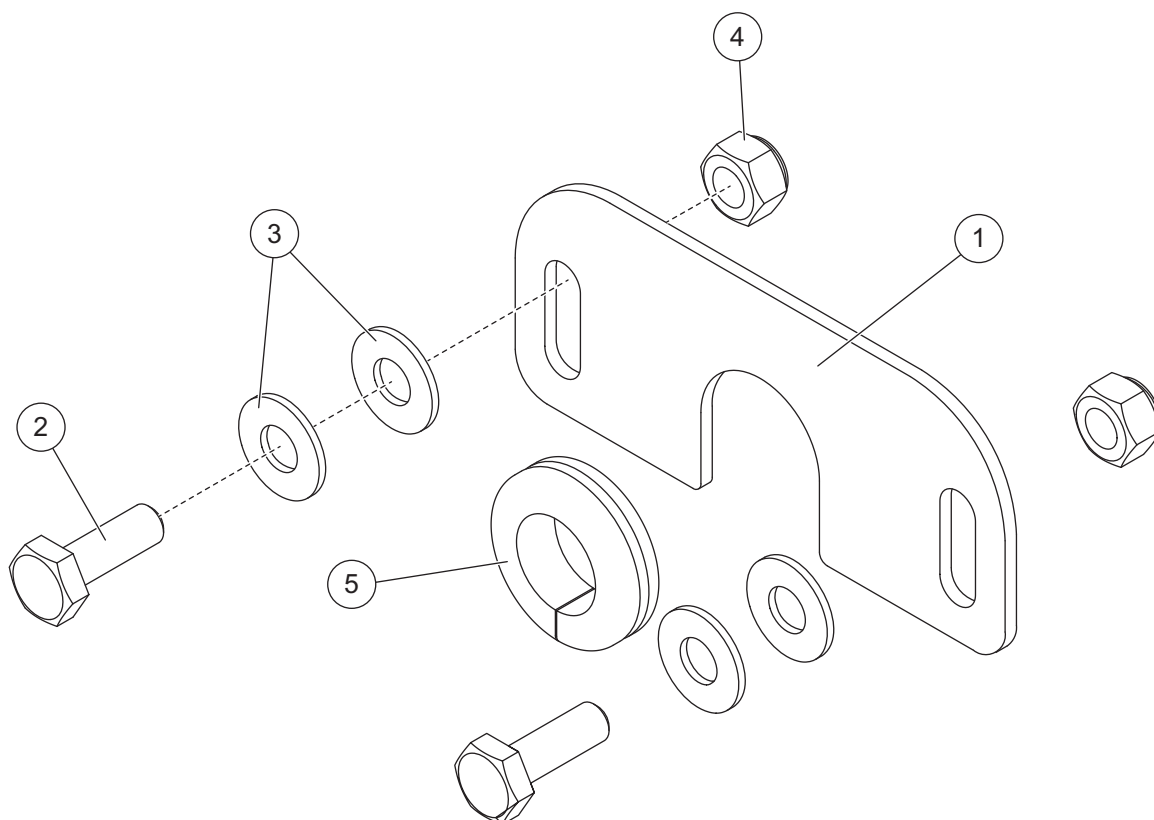


Enclosure Plate Kit

SP-575X-1 & SP-1075X-1 Single-Stage Tailgate Spreaders

PARTS LIST



85316 Enclosure Plate Kit					
Item	Qty	Description	Item	Qty	Description
1	1	Enclosure Plate	4	2	1/4-20 Hex Locknut SS
2	2	1/4-20 x 3/4 Hex Cap Screw SS	5	1	5/8 ID Grommet
3	4	1/4 Flat Washer SS	ns	6	Push Retainer, 1/4 x 3/4 x 1/2
ns = not shown			SS = Stainless Steel		

INSTALLATION INSTRUCTIONS

⚠ WARNING

Do not exceed GVWR or GAWR ratings as found on the driver-side vehicle door cornerpost.

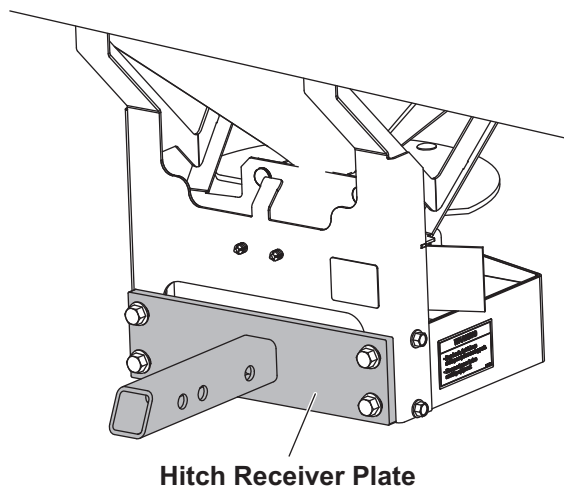
⚠ CAUTION

Read this document before installing the enclosure plate kit.

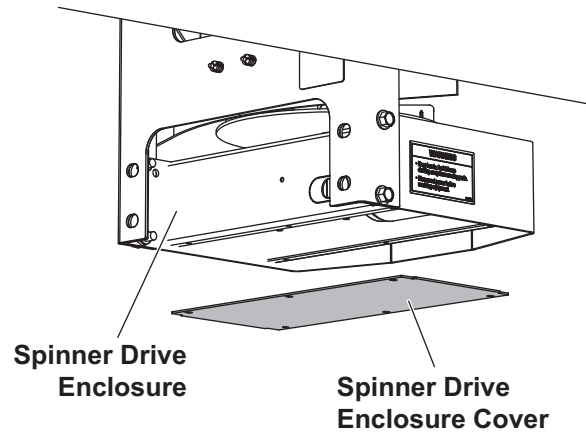
⚠ CAUTION

Use standard methods and practices when attaching spreader and installing accessories, including proper personal protective safety equipment.

1. Park the vehicle on a smooth, level, hard surface, such as concrete. Turn the vehicle ignition to the "OFF" position and remove the key.
2. Disconnect the main spreader harness from the vehicle harness.
3. Remove the spreader from the vehicle.
4. Remove the hitch receiver plate.



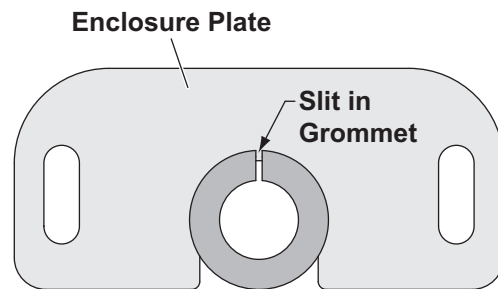
5. Remove the spinner drive enclosure cover.



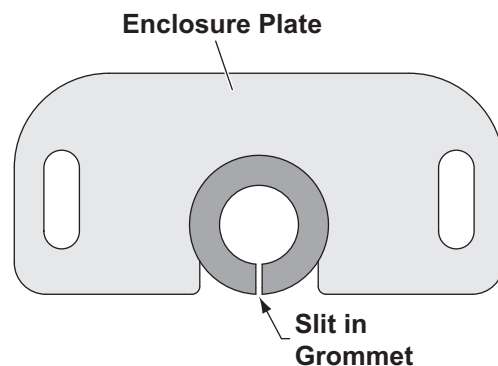
6. Remove and clean off all salt from the enclosure.

NOTE: Use dielectric grease on all electrical connections.

7. Attach the supplied rubber 5/8" ID grommet to the main spreader harness, accessory wires (if being used), and enclosure plate.
 - a. If accessory wires are not being used, verify that the grommet is positioned with the slit facing up.



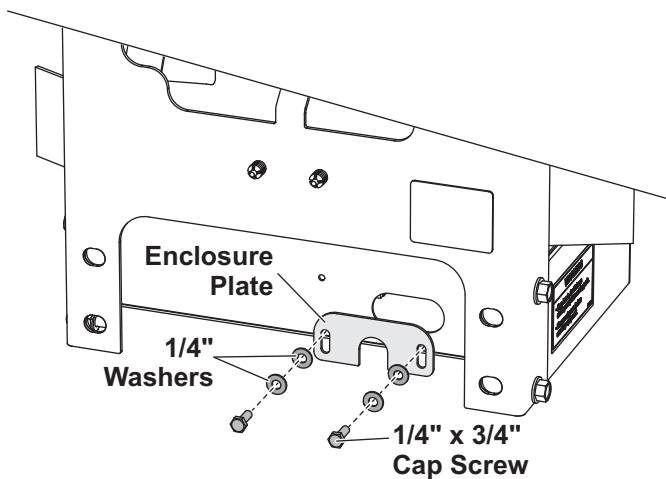
- b. If accessory wires are being used, verify the grommet is positioned with the slit facing down.



⚠ CAUTION

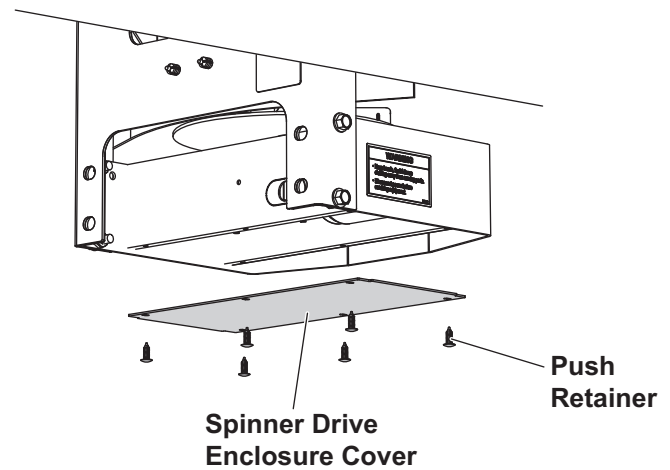
Before drilling any holes, check both sides of the material for any wires, fuel lines, fuel tanks, etc., that may be damaged by drilling.

8. Using the supplied enclosure plate as a template, drill two 9/32" holes through the spinner drive enclosure cover.
9. Use the 1/4" x 3/4" cap screws, 1/4" flat washers, and 1/4" locknuts to loosely secure the enclosure plate to the spinner drive enclosure. Do not fully tighten the cap screws at this time.



10. Slide the enclosure plate down until the grommet groove fits over the spinner drive enclosure, removing any gap. Fully tighten the cap screws and locknuts.
11. If using accessories, use a zip tie to secure together all harnesses that are routed through the enclosure.

12. Reattach the spinner drive enclosure cover using the supplied push retainers.



13. Reattach the hitch receiver plate.

Copyright © 2019 Douglas Dynamics, LLC. All rights reserved. This material may not be reproduced or copied, in whole or in part, in any printed, mechanical, electronic, film, or other distribution and storage media, without the written consent of TrynEx International, LLC. Authorization to photocopy items for internal or personal use by the TrynEx International outlets or spreader owner is granted.

TrynEx International reserves the right under its product improvement policy to change construction or design details and furnish equipment when so altered without reference to illustrations or specifications used. TrynEx International or the vehicle manufacturer may require or recommend optional equipment for spreaders. Do not exceed vehicle ratings with a spreader. TrynEx International offers a limited warranty for all spreaders and accessories. See separately printed page for this important information. The following is a registered (®) trademark of Douglas Dynamics, LLC: SnowEx®.

Printed in U.S.A.
