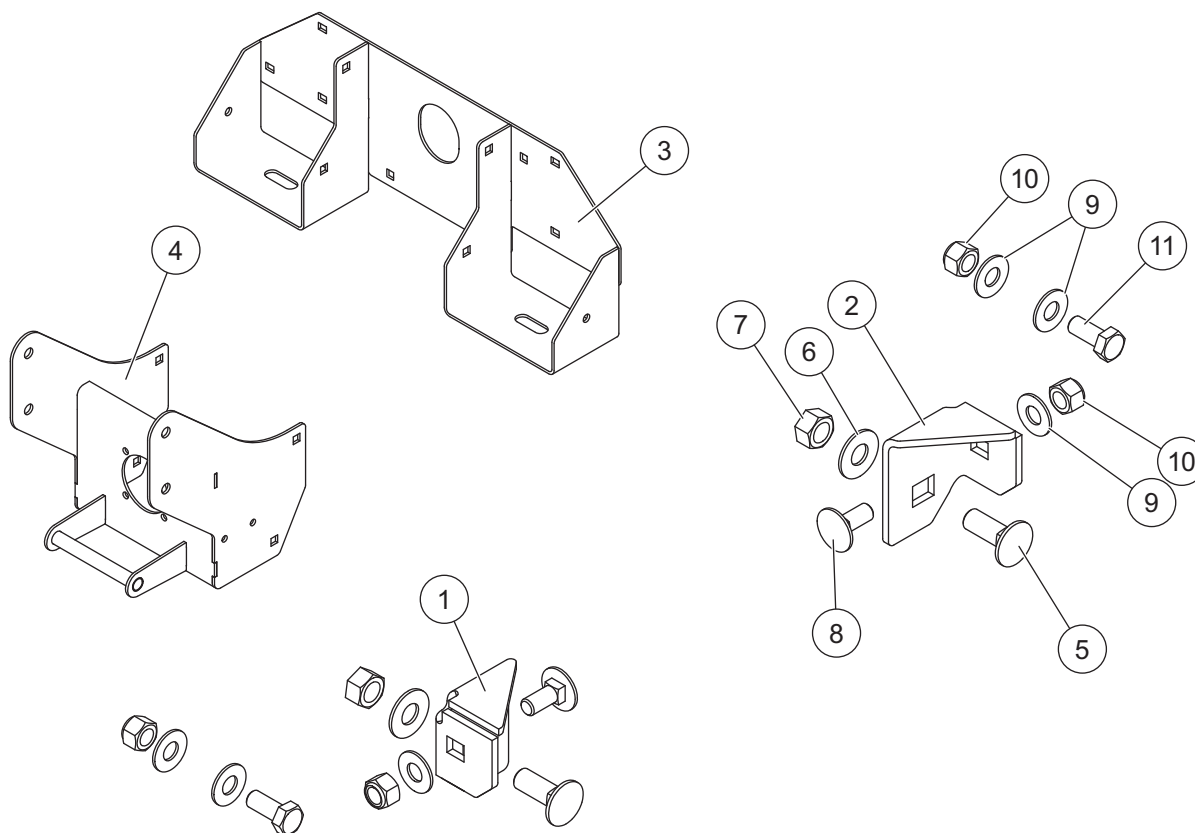


Chute Hanger Update Kit

HELIXX™ Hopper Spreaders #11780, 11790, 11800, 11810

PARTS LIST



90824 Chute Hanger Update Kit							
Item	Part	Qty	Description	Item	Part	Qty	Description
1		1	Chute Hanger Bracket, PS	7		2	3/8-16 Hex Locknut GB SS
2		1	Chute Hanger Bracket, DS	8		2	5/16-18 x 1 Carriage Bolt SS
3		1	Fork Pocket Frame	9		6	5/16 Flat Washer SS
4		1	Gear Box Plate	10		4	5/16-18 Hex Locknut GB SS
5		2	3/8-16 x 1 Carriage Bolt SS	11		2	5/16-18 x 3/4 Hex Cap Screw SS
6		2	3/8 Flat Washer Type A Wide SS				
G = Grade				SS = Stainless Steel			

This document is for SnowEx® HELIXX™ hopper spreaders with serial numbers beginning with 190101 to 190920.

INSTALLATION INSTRUCTIONS

⚠ WARNING

Do not exceed GVWR or GAWR ratings as found on the driver-side vehicle door cornerpost.

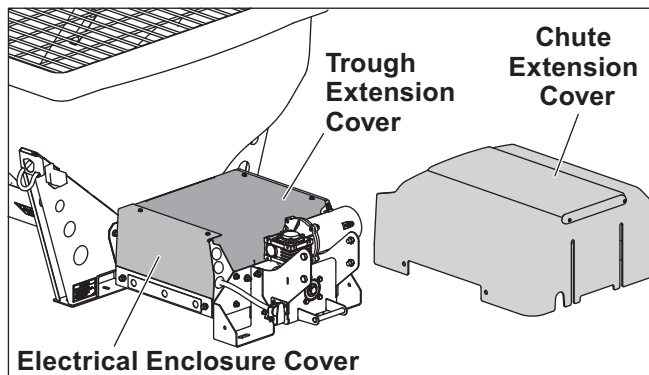
⚠ CAUTION

Read this document before installing the chute hanger reinforcement kit.

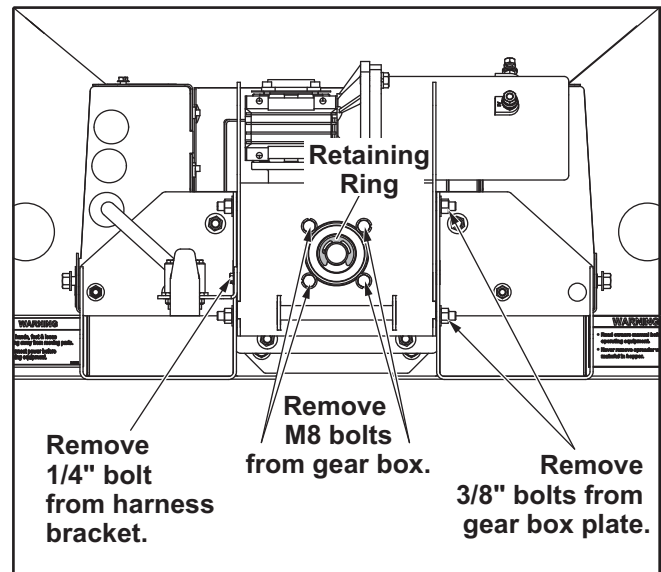
⚠ CAUTION

Use standard methods and practices when attaching spreader and installing accessories, including proper personal protective safety equipment.

1. Park the vehicle on a smooth, level, hard surface, such as concrete. Turn the vehicle ignition to the "OFF" position and remove the key.
2. Remove the spinner assembly and set it aside.
3. Remove chute extension cover, trough extension cover, and electrical enclosure cover.

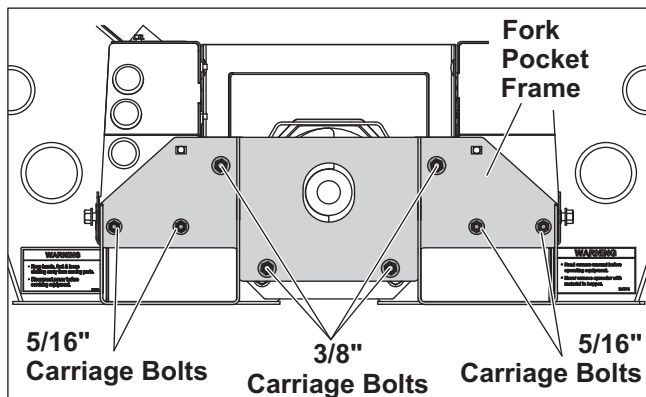


4. Remove the four M8 bolts from the gear box. Remove the four 3/8" carriage bolts from gear box plate, and remove the two 1/4" bolts from the harness bracket. Remove the retaining clip from the drive shaft. Keep all fasteners for reinstallation. Remove the gear box plate, supporting the motor/gear box as the plate is removed. Discard the gear box plate.



5. Slide the gear box assembly off of the drive shaft and set it aside, being careful not to damage the electrical harness.

6. Remove and retain the four 5/16" carriage bolts and four 3/8" carriage bolts from the fork pocket frame. Replace the fork pocket frame with the new one from the update kit, and reinstall the 5/16" hardware.

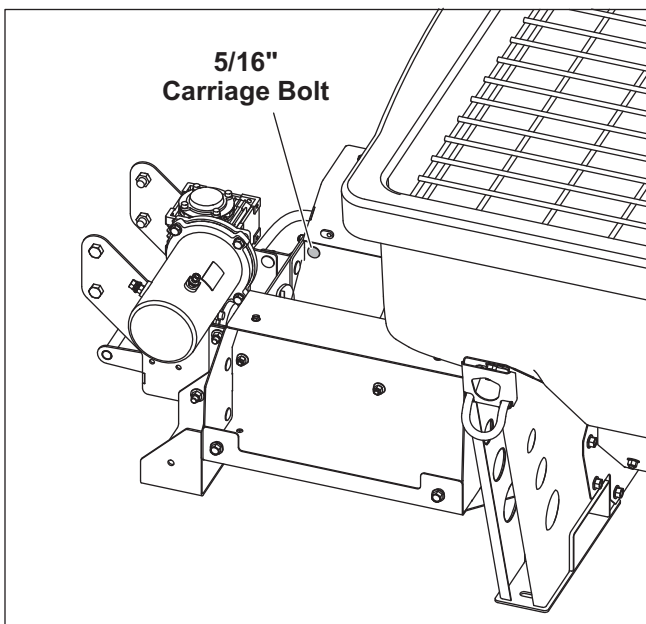


⚠ CAUTION

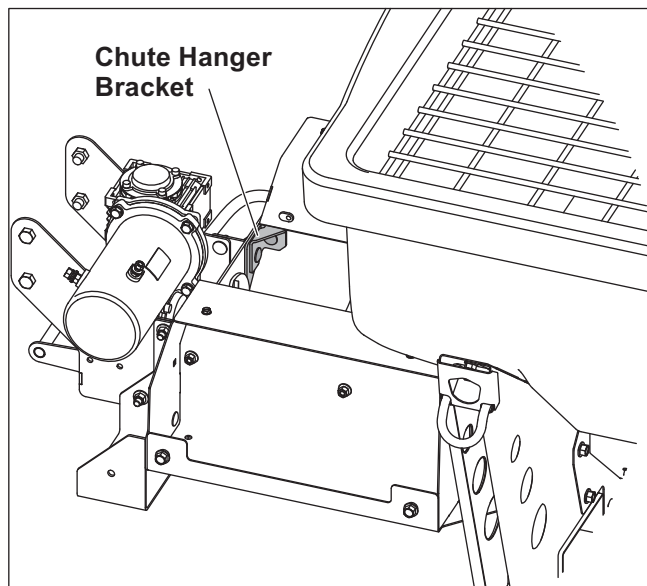
Before drilling holes, check to be sure that no vehicle wiring or other components could be damaged.

Using the provided drill bits, drill a pilot hole 3/16" through the new hole in the fork pocket frame and into the side boxes. Drill out the pilot hole to a diameter of 11/32".

7. Remove the 5/16" carriage bolts from the driver-side trough.



8. Install the chute hanger bracket using the provided 3/8" and 5/16" carriage bolts, washers, and locknuts.



9. Install the provided 5/16" hardware, placing a 5/16" washer on the 5/16" x 1" carriage bolt and inserting it through the hole drilled in Step 6. Place another 5/16" washer over the carriage bolt and fasten with a 5/16" locknut, ensuring that a washer is used on both sides of the frame.
10. Repeat Steps 7–9 for the passenger's side.
11. Reinstall the gear box assembly into the auger coupler making sure to align key shaft. Install the provided gear box plate and all hardware removed in Step 4.
12. Reinstall the electrical enclosure cover, the trough extension cover, and the chute extension cover that were removed in Step 3.
13. Reinstall the spinner assembly.

Copyright © 2019 Douglas Dynamics, LLC. All rights reserved. This material may not be reproduced or copied, in whole or in part, in any printed, mechanical, electronic, film, or other distribution and storage media, without the written consent of TrynEx International, LLC. Authorization to photocopy items for internal or personal use by the TrynEx International outlets or spreader owner is granted.

TrynEx International reserves the right under its product improvement policy to change construction or design details and furnish equipment when so altered without reference to illustrations or specifications used. TrynEx International or the vehicle manufacturer may require or recommend optional equipment for spreaders. Do not exceed vehicle ratings with a spreader. TrynEx International offers a limited warranty for all spreaders and accessories. See separately printed page for this important information. The following are registered (®) or unregistered (™) trademarks of Douglas Dynamics, LLC: HELIXX™, SnowEx®.

Printed in U.S.A.
