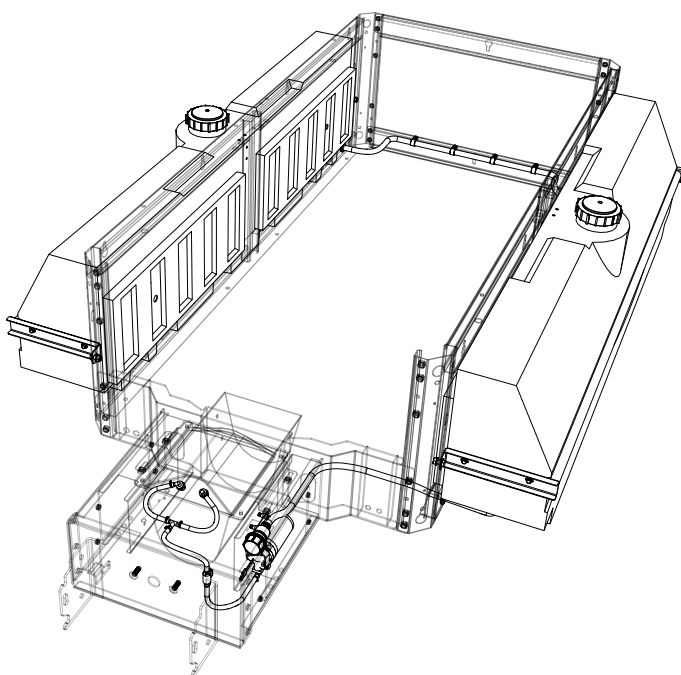


# Owner / Operator's Manual

This Manual Must Be Read Before Operating The Equipment



## PWX-200

Serial # 200959 and higher

## PWX-250

Serial # 200959 and higher



Madison Heights, Michigan 48071  
800-SALTERS  
[www.snowexproducts.com](http://www.snowexproducts.com)

© TrynEx International 2013  
(REV C) F50766

**CUSTOMER COPY**

# Table of Contents



General Information .....	3
Introduction .....	4
Safety .....	5
Wiring Installation Instructions .....	6-9
Tank and Pump Installation Instructions .....	10-15
Operating and Maintaining the PWX .....	15
Harness Diagram .....	16
Troubleshooting .....	17
Warranty .....	18
Key to Parts .....	19
Tank Assembly Parts Breakdown	
Model # PWX-200.....	20-21
Model # PWX-250.....	22-23
Pump Assembly Parts Breakdown	
Model # PWX-200/PWX-250 .....	24-25
Notes .....	26-27

Have a question or need assistance?

**SnowEx Customer Care**

**(800) SALTERS**

or (248) 586-3500

Monday through Friday 8:00 AM to 4:30 PM EST

Fax: (248) 691-8378

E-mail: [customercare@trynexfactory.com](mailto:customercare@trynexfactory.com)

Website: [www.snowexproducts.com](http://www.snowexproducts.com)



## General Information



### CONGRATULATIONS!

The Pre-Wet System you have purchased is an example of snow and ice control technology at its finest! Your Pre-Wet System's self-contained design is a trademark of all SnowEx products. Here's why...

**SIMPLICITY:** Fewer moving parts manufactured of higher quality means minimal maintenance for your SnowEx spreading system.

**RELIABILITY:** High impact linear low density polyethylene tank. State-of-the-art electronic control, custom engineered powder coated frame; found only on SnowEx products.

**WARRANTY:** Best in the industry, hands down! 2 years standard and now 5 year extended (optional).

The benefits you are about to recognize are that of time, money and effort.  
We welcome you to the world of SnowEx Performance.

## Registration

Record the following information in this manual for quick reference.

Model Number \_\_\_\_\_

Serial Number \_\_\_\_\_

Date of Purchase \_\_\_\_\_

Dealer Where Purchased \_\_\_\_\_

When ordering Parts, the above information is necessary. This will help to see that you receive the correct parts.

Please register your system for warranty at your local SnowEx Dealer. This will also give us a record so that any safety or service information can be communicated to you.

The Serial Number can be found on the Tank Mounting Tube.



This manual has been designed for your help. It will assist you and instruct you on the proper set-up, installation and use of this spreader.

Refer to the table of contents for an outline of this manual.

We require that you read and understand the contents of this manual completely (especially all safety information) before attempting any procedure contained herein.



**THIS SIGN SHOULD ALERT YOU:**

The Society of Automotive Engineers has adopted this **SAFETY ALERT SYMBOL** to pinpoint characteristics that, if **NOT** carefully followed, can create a safety hazard. When you see this symbol in this manual or on the machine itself, **BE ALERT!** Your personal safety and the safety of others is involved.

Defined below are the **SAFETY ALERT** messages and how they will appear in this manual:



**DANGER**

(RED)

Information that, if not carefully followed, can cause death!



**WARNING**

(ORANGE)

Information that, if not carefully followed, can cause serious personal injury or death!



**CAUTION**

(YELLOW)

Information that, if not carefully followed, can cause minor injury or damage to equipment



Before attempting any procedure in this book, these safety instructions must be read and understood by all workers who have any part in the preparation or use of this equipment.

For your safety warning and information decals have been placed on this product to remind the operator of safety precautions . If anything happens to mark or destroy the decals, please request new ones from SnowEx.



Never exceed the Gross Vehicle Weight Rating of vehicle. Failure to do so may limit a vehicles handling characteristics.

Never attempt to take a unit off a truck with material in it.



Always keep hands, feet, and clothing away from power driven parts.

Unit must be pinned and locked into position before operating vehicle.

Always shut off vehicle and power source before attempting to attach or detach or service unit Be sure vehicle/power source is properly braked or chocked.

Remember, most accidents are preventable and caused by human error. Exercising of care and precautions must be observed to prevent the possibility of injury to operator or others!

Never operate equipment when under the influence of alcohol, drugs, or medications that might alter your judgment and/or reaction time.

Before working with the equipment, secure all loose fitting clothing and unrestrained hair.

Always wear safety glasses with side shields when servicing equipment. Failure to do this could result in serious injury to the eyes.

Never allow children to operate or climb on equipment.

Always check areas to be spread to be sure no hazardous conditions or substances are in the area.

Always inspect unit for defects: broken, worn or bent parts, weakened areas on spreader.

Remember it is the owner's responsibility to communicate information on safe usage and proper maintenance of all equipment.

Always make sure personnel are clear of areas of danger when using equipment.

Never weld or grind on equipment without having a fire extinguisher available.

Inspect the unit periodically for defects. Parts that are broken, missing or worn out must be replaced immediately. The unit or any part of it can not be altered without prior written permission from the manufacturer.

Always inspect pins and latches whenever attaching or detaching spreader, and before operation of spreader.

Never exceed 45 m.p.h. when loaded spreader/sprayer is attached to vehicle. Braking distances may be increased and handling characteristics may be impaired at speeds above 45 m.p.h.



Never use materials with foreign debris with any sprayer These units are designed to handle clean, free flowing material.

Never leave material in hopper for long periods of time.

# Installation Instructions



## Connecting to the Spreader's Control Module

It is recommended that this kit be installed by your SnowEx Dealer.

### STEP 1

Unplug the Spreader from all of the plugs on the Bumper.

### STEP 2

Remove Spinner Drive Latch Pin.

### STEP 3

Put Spinner Drive into 'Down' position.

### STEP 4

Remove the Auger Extension Cover.

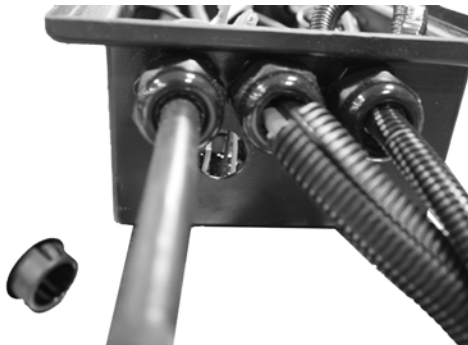
### STEP 5

Remove the Cover of the Power Box.



### STEP 6

Push out the lower Plug in the rearward-side of the Control Box.



# Installation Instructions



## Connecting to the Spreader's Control Module

### STEP 7

Cut the Zip Tie holding the Orange and Green Wires.



### STEP 8

Remove the Cord that connects to the Spinner Drive:

Detach the wires to the Spinner Power Cord from the studs on the Control Board.

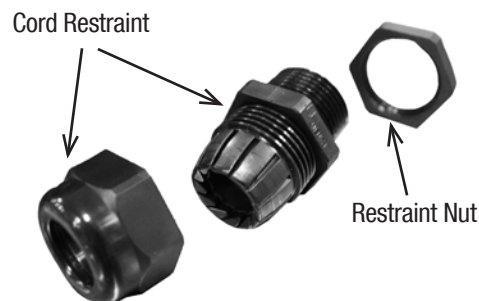
Remove the Harness.



Note: it is optional to remove the Spinner Harness for the installation. It only makes it easier to tighten the PWX Harness Cord Restraint.

### STEP 9

Insert PWX Harness [F50679] through the hole from which the plug was removed. Install Restraint Nut [D6781] on inside. Tighten Restraint Nut. Do not tighten the Cord Restraint yet.



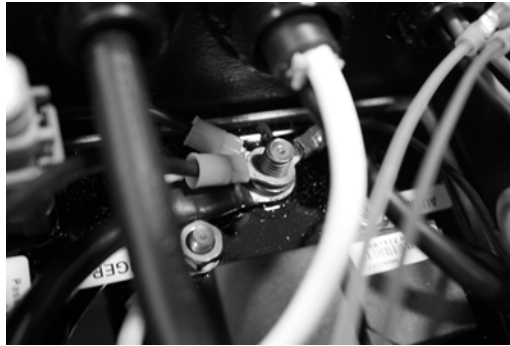
# Installation Instructions



## Connecting to the Spreader's Control Module

### STEP 10

Remove the Nut and Serrated Washer from the "GND -" Terminal. Place the Black Wire of the PWX Harness onto the "GND -" Terminal. Reinstall the Nut and Washer. Tighten.



### STEP 11

Reinstall the Spinner Harness. The White Wire belongs on the "Spinner +" Terminal; the Black Wire belongs on the "Spinner -" Terminal. Place Nut and Washer on Stud. Tighten both nuts and the Cord Restraint.

7/16" Nutdriver... 15/16" Wrench... Adjustable Wrench...

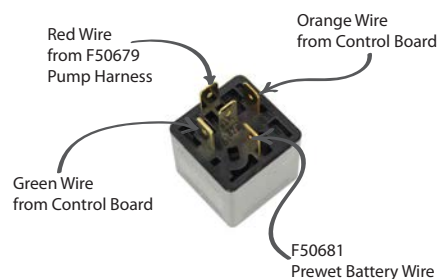
### STEP 12

Install the round Terminal End of the Relay Wire [F50681] onto the "BAT +" stud. Replace Nut and Washer. Tighten.



### STEP 13

Wire the Relay [D6083] as shown. Use Dielectric Grease.





# Installation Instructions



## Connecting to the Spreader's Control Module

### STEP 14

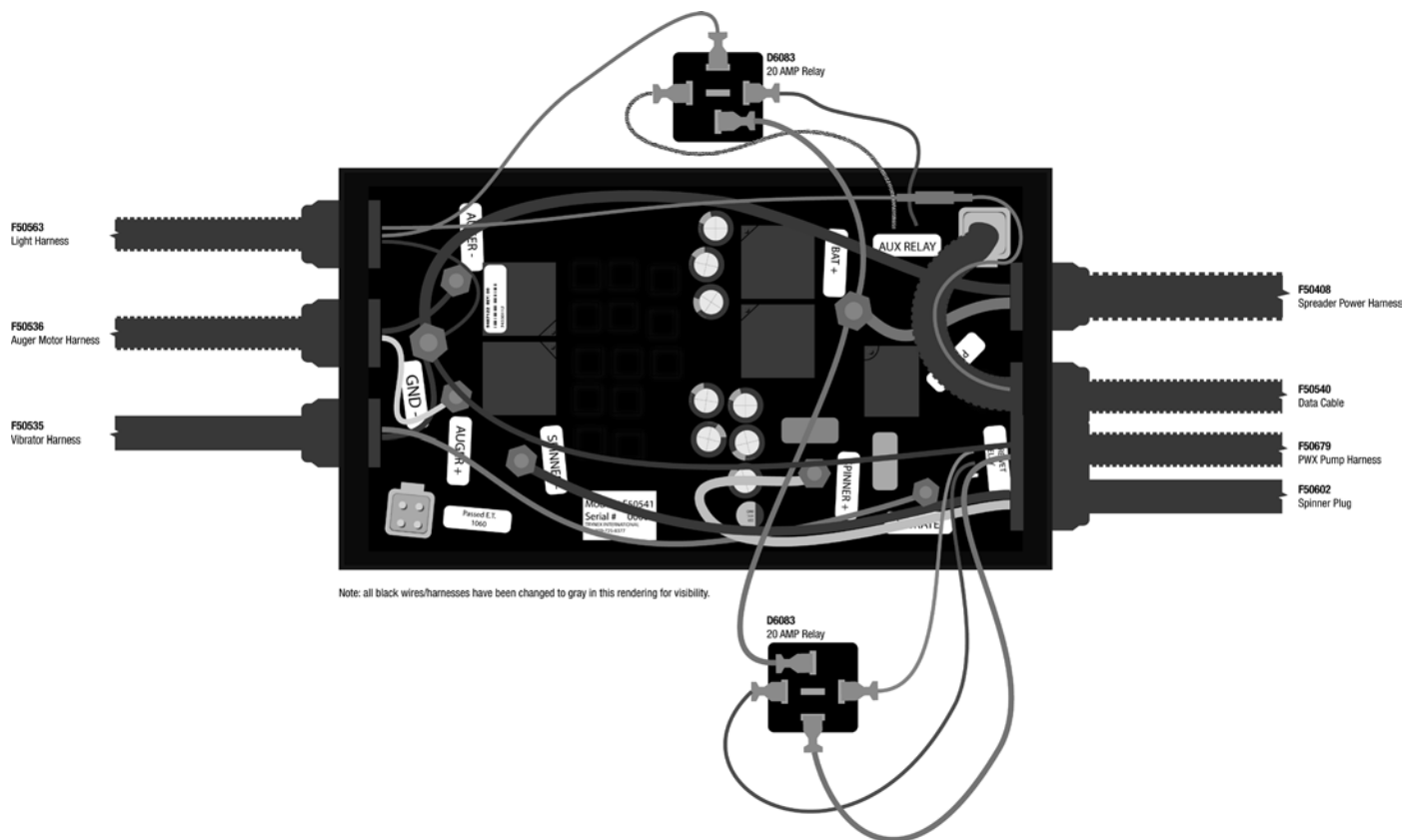
Coil the Wires to the Relay back around and tie to the one of the large wires with Zip Tie [F50202].



Put Power Box Cover back on. Leave Auger Extension Cover off.

**THE ELECTRICAL INSTALLATION IS COMPLETE.**

**Diagram of Finished Installation.**



# Installation Instructions



## Installing on the Spreader

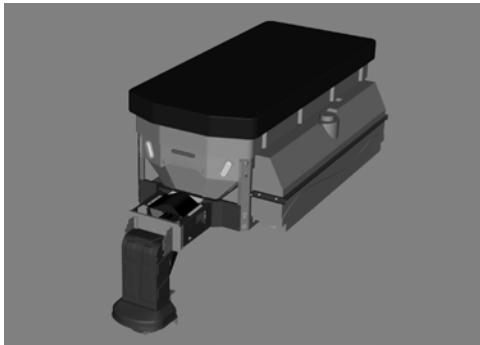
It is recommended that this kit be installed by your SnowEx Dealer.

### STEP 1

Check that Spinner Drive is in “Down” position.

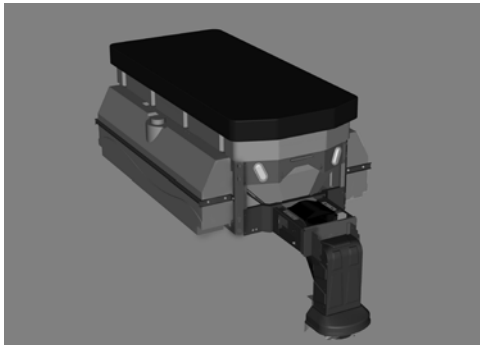
### STEP 2

Remove the Passenger-Side Tank Assembly[F50261 / F50251] from the pallet. The back of the Tank has two raised areas. Push these between the rails of the Sideframe. The Tank should ‘click’ into place. The tank is in position when centered between the Corner Posts of the Sideframe and stays ‘clicked’ into the Sideframe. Bolt Mounting Rail in place using the “Tank Mounting Hardware Kit.”



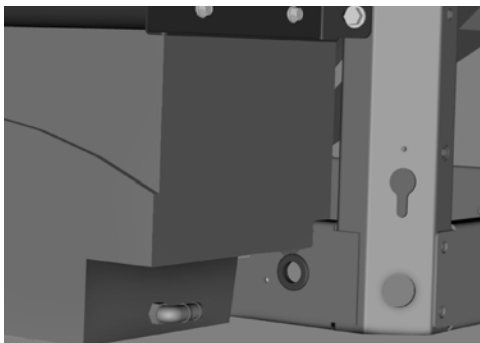
### STEP 3

Remove the Driver-Side Tank [F50261] from the pallet. Repeat the procedure of the previous step to install this Tank.



### STEP 4

Use parts from the Tank Mounting Kit. Install a Rubber Grommet [D5602] into each of the two holes in the front of the Frame. The holes are on the side and in line with the ends of the Tanks.



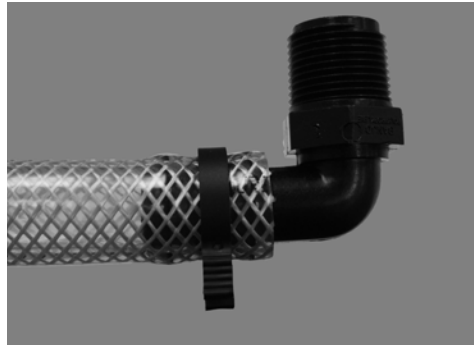
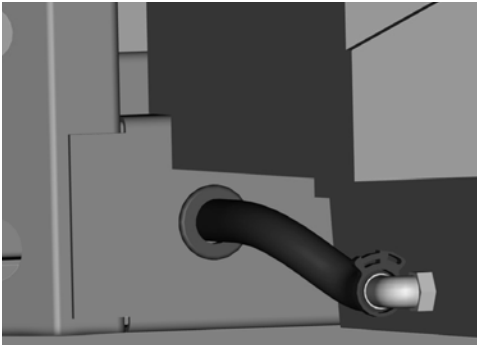
# Installation Instructions



## Installing on the Spreader

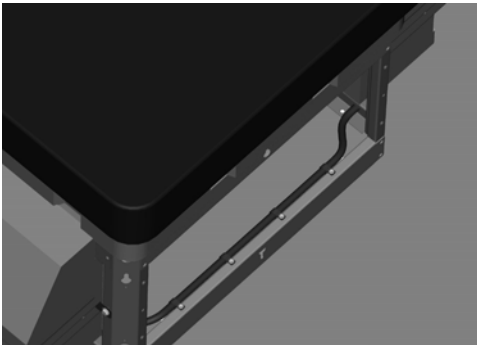
### STEP 5

Slide the 3/4" ID Hose [D6990] through the Grommet on the driver's side of the vehicle (use warm soapy water to make it easy). Slide onto the Hose Barb on the end of the driver's side tank (at the bottom). Put a Large Plastic Clamp [F50577] over the hose and hose barb. Tighten. Repeat for Passenger Side tank.



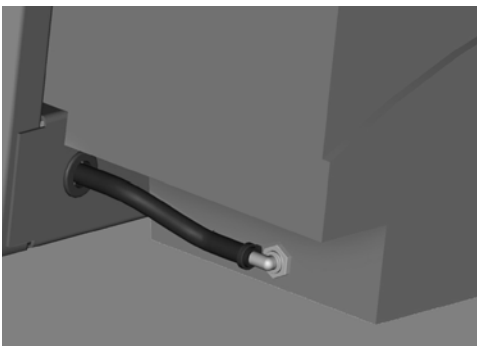
### STEP 6

Secure the Hose to the Lower Frame Rail using the four metal Clamps [D7220] and the Driller Bolts [D6447]. Space the Clamps evenly.



### STEP 7

Install the remaining Hose Grommet [D5602] into the hole in the frame by the Passenger-Side Tank. Slide the Hose [D6989] through the Grommet and onto the Hose Barb already installed on the Tank. Tighten with a 1/2" Plastic Hose Clamp [F50146] from the Tank Connection Hardware Kit.



# Installation Instructions

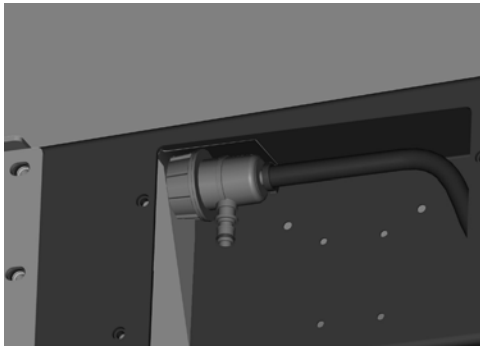


## Installing on the Spreader

---

### STEP 8

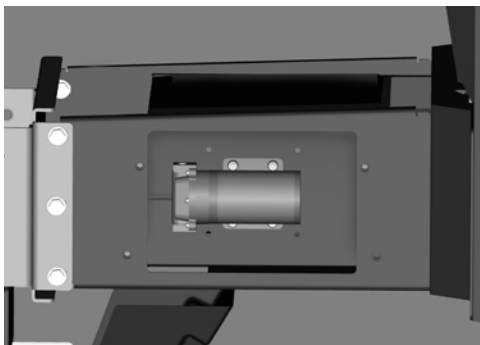
Push hose through the hole (oval-shaped) in the Rear Auger Extension [where the pump will be mounted]. Install the Filter [D5267] onto the end of this Hose. The Hose fits onto the Hose Barb coming off the end on the Filter. Clamp with the remaining 1/2" Plastic Hose Clamp [F50146].



---

### STEP 9

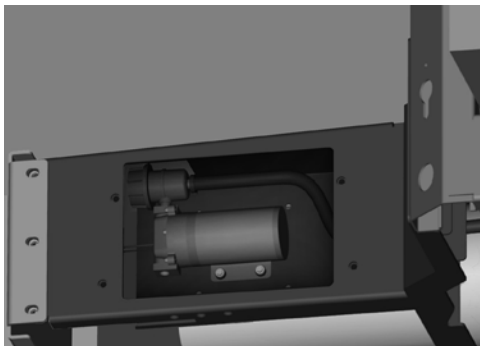
Mount Pump [D5265] to the Rear Auger Extension. Use the Pump Mounting Hardware Kit. The Pump should be mounted so the head of the Pump faces rearward. The Washers [D5292] and the Bolts [D5948] should be on the "Pump-Side" and the Nut [D5948] should be on the other side of the metal. Tighten until the Rubber Pump Feet are slightly squished.



---

### STEP 10

Connect the Filter to the Inlet of the Pump. This should be on the upward side. Secure the connection by pushing the Tab on the Pump until it clicks into position.



# Installation Instructions



## Installing on the Spreader

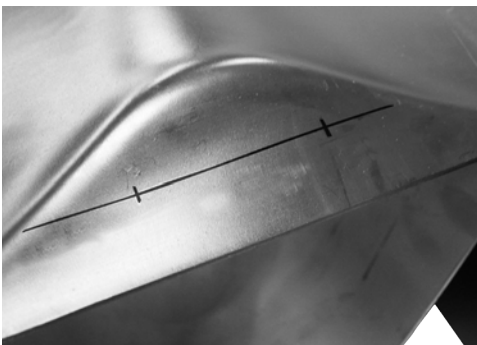
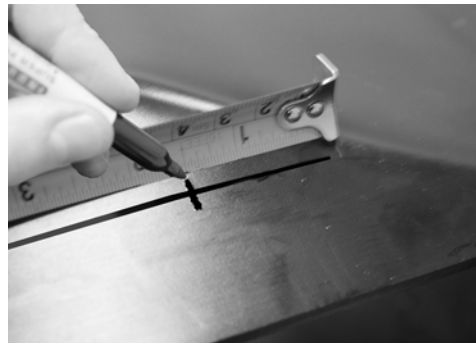
### STEP 11

Plug the pump into the Pre-Wet Harness (installed in "Electrical Installation"). Use Dielectric Grease on the connection. Route the Harness over the Auger Tube.



### STEP 12

Mark a line 1-5/8" from the edge of the Trough Cover. Make a mark 1-1/2" from the edge along this line, one on each side. Drill an 11/16" hole at both of the locations.



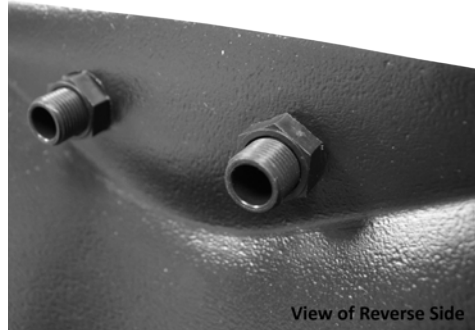
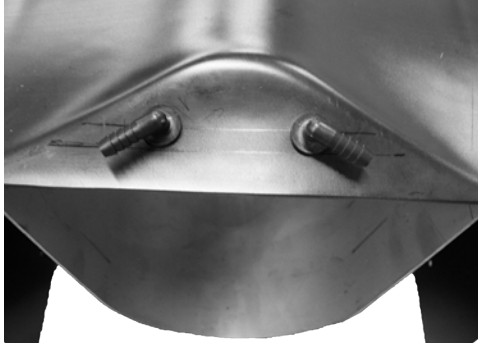
# Installation Instructions



## Installing on the Spreader

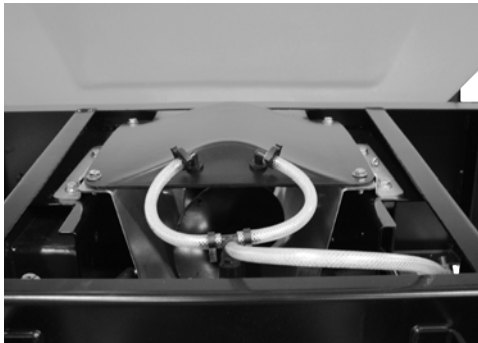
### STEP 13

Put Nozzles in the holes. Thread nut on and tighten. Align the barb parallel with the angle of the Trough Cover.



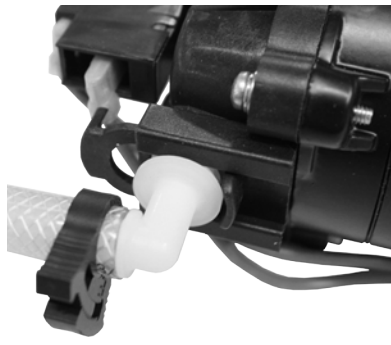
### STEP 14

Slide the Hose Assembly onto the Barbs just installed. The 9" Hose should go to the Barb closer to the Hopper. Use the Small Plastic Hose Clamps [F50145] to tighten.



### STEP 15

Connect the Hose Assembly to the Pump on the outlet side. Clamp with clip on the pump.



# Installation Instructions

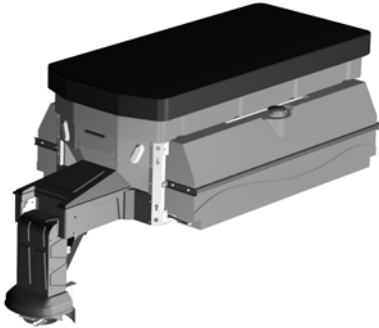


## Installing on the Spreader

---

### STEP 16

Re-Install the Auger Extension Cover and the Spinner Drive Latch Pin.



---

**THE INSTALLATION IS COMPLETE.**

---

## Operating the PWX

---

### Enabling the Pre-Wet Function

Fill the Tanks with the pre-wet solution of your preference.

Turn Control Pendant on.

Push the “Pre-Wet Enable” button; the button will light when pre-wet is enabled.

Begin spreading by pushing the “Start” button. The Pump will turn on with the with the Auger and Spinner. The flow rate will adjust automatically. The pre-wet solution and the spreading material will mix in the Auger Discharge Tube.

To stop Pre-Wetting the spreading material push the “Pre-Wet Enable” button; the light will turn off. Otherwise the PWX is integrated with the spreader controls and the pump will stop operating when you push “Start-Stop.”

To adjust the flow rate of the PWX system, adjust the valve in the hose.

---

### Maintenance

Paint or Oil scratches in the paint/metal.

Do not clean tanks with petroleum products. This will damage the tanks.

Periodically apply Dielectric Grease to electrical connections to prevent corrosion.

Empty Tanks and Spreader’s Hopper after each use to prevent freezing.

To drain tanks; remove the cap from the driver’s side tank.

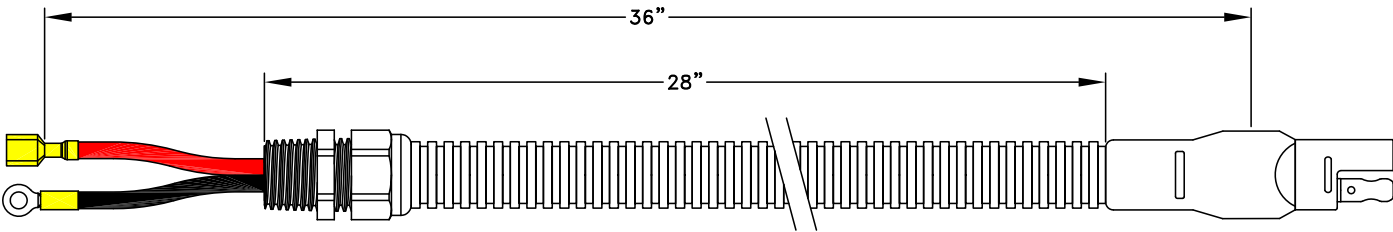
Store system indoors or run RV Antifreeze through pump and store with RV Antifreeze in Pump.

---

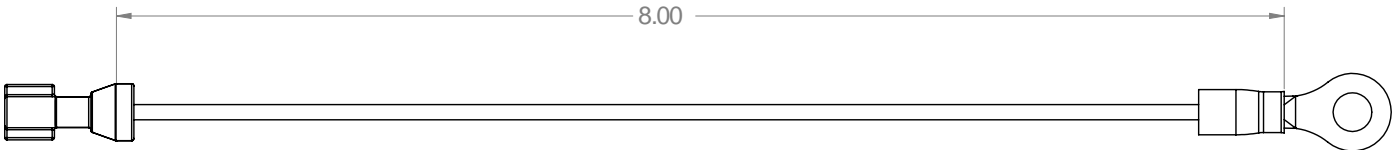
# Harness Diagram



## F50679 PWX Pump Harness



## F50681 PWX Relay Wire





# Troubleshooting



Model # PWX-200 / PWX-250

**Warning: First read all warning instructions and safety messages before servicing the Sprayer.**

## Preliminary checks

- Be sure all electrical connections are tight and clean.
- Be sure nothing is obstructing the nozzles.

PROBLEM	POSSIBLE CAUSE	SOLUTION
Pump doesn't run.	Loose electrical connections. Blown fuse. Pump seized.	Check all connections. Replace fuse. Replace pump.
Controller shut down.	Poor electrical connections. Electrical short. Controller failure.	Clean or replace connectors. Use dielectric grease. Check electrical connections. Check for bare wires. Replace controller.
Liquid not spraying.	Empty tank. Full Strainer. Pump not running. Obstructed nozzle.	Fill tank. Clean or replace filter element. Refer to Problem 1. Remove and clean.

## Limited Warranty

SnowEx products are warranted for a period of two years from the date of purchase against defects in material or workmanship under normal use and service, subject to limitations detailed below. Warranty period of two years begins on the date of purchase by the original retail user.

The WARRANTY REGISTRATION must be submitted to the SnowEx for this warranty to become effective. This warranty applies to the original retail purchaser only. This warranty does not cover damages caused by improper installation, misuse, lack of proper maintenance, alterations or repairs made by anyone other than authorized SnowEx dealers or SnowEx personnel. Due to the corrosive properties of the materials dispensed by spreaders, Trynex does not warrant against damage caused by corrosion. Warranty claims by the user must be made to the dealer from where the product was purchased, unless otherwise authorized by SnowEx. SnowEx reserves the right to determine if any part is defective and to repair or replace such parts as it elects. This warranty does not cover shipping costs of defective parts to or from the dealer.

## LIMITATION OF LIABILITY

Neither SnowEx, nor any company affiliated with it, makes any warranties, representations for promise as to the performance or quality other than what is herein contained. The liability of SnowEx to the purchaser for damages arising out of the manufacture, sale, delivery, use or resale of this spreader shall be limited to and shall not exceed the costs of repair or replacement of defective parts. SnowEx shall not be liable for loss of use, inconvenience or any other incidental, indirect or consequential damages, so the above limitations on incidental or consequential damages may not apply to you.

NO DEALER HAS AUTHORITY TO MAKE ANY REPRESENTATION OR PROMISE ON BEHALF OF SnowEx, OR TO ALTER OR MODIFY THE TERMS OR LIMITATIONS OF THIS WARRANTY IN ANY WAY.

## Key to Parts

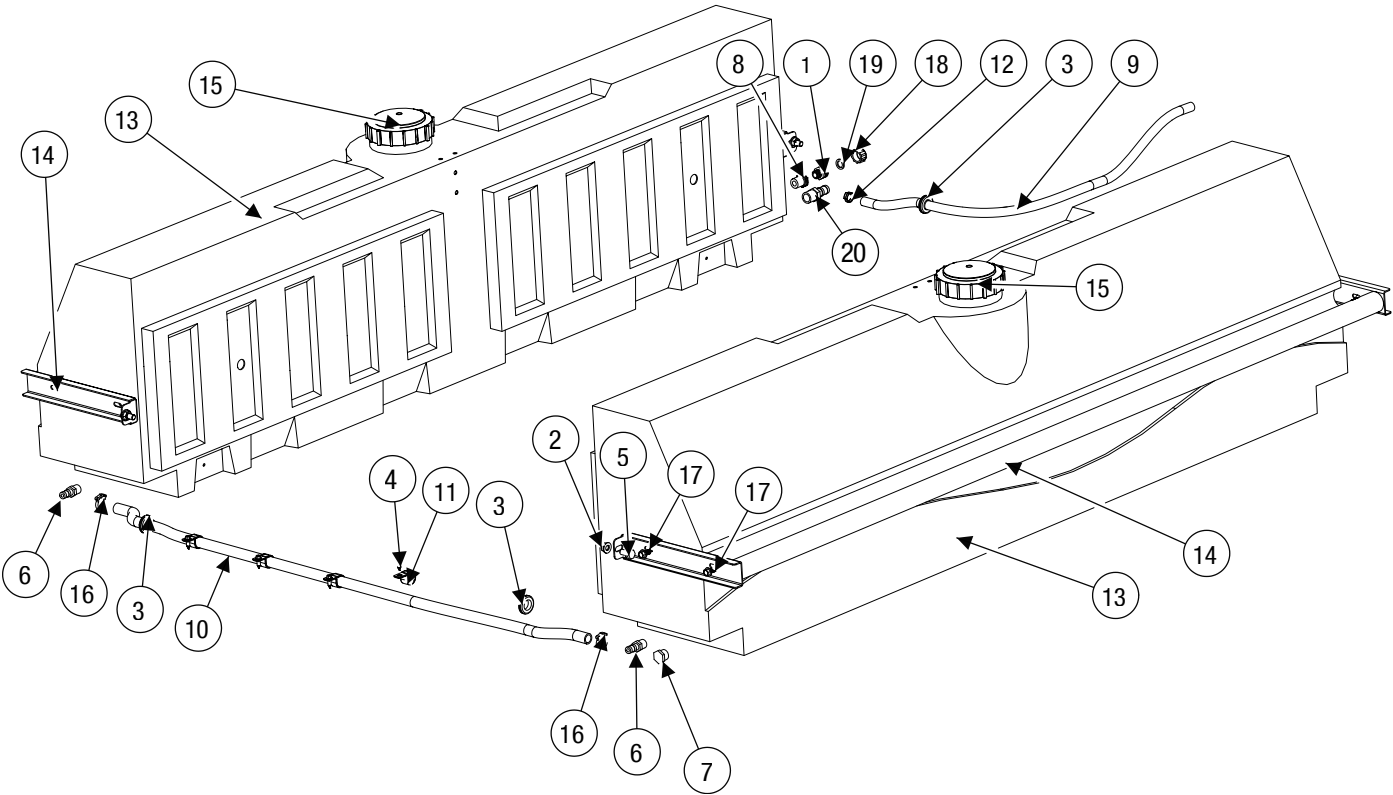


D5255	Hose Barb   3/4" Male Thread X 1/2"	D6989-42	Hose   1/2" X 42" PVC Clear
D5265	Pump   2.0 GPM Diaphragm	D6989-45	Hose   1/2" X 45" PVC Clear
D5267	Line Strainer   Quick Attach Black Bowl	D6990-60	Hose   3/4" X 1" X 60" PVC Clear
D5269	Hose Barb   5/8" Quick Attach X 3/8" 90°	D6990-80	Hose   3/4" X 80" PVC Clear
D5292	Washer   #10 Flat Stainless	D7220	Clamp   1" Rubber Coated
D5294	Bolt   #10-32 X 1-1/4" Hex Head MS Stainless	F50145	Hose Clamp   3/8" Double Tooth Poly
D5357	Garden Hose - 1/2 NPT Adapter	F50146	Hose Clamp   Double Tooth Poly 3/8"
D5535	Nut 1/2"-13 Serrated Flange Zinc	F50148	Hose Barb Tee   3/8"
D5602	Hose Grommet	F50202	Cable Tie   6" 30lb
D5948	Nut   #10-32 Nylox Stainless	F50251	Tank   100 Gallon Yellow Saddle
D6083	Relay   20 Amp	F50261	Tank   125 Gallon Yellow Saddle
D6447	5/16" X 1" Driller Zinc	F50447	Tank Mount Bracket
D6528	Bolt   1/2"-13 X 1" Serr. Flange Hex Zinc	F50487	Vented Lid
D6781	Nut   1/2" NPT Black Nylon	F50577	Hose Clamp   3/4" Double Tooth Poly
D6908	Pipe Plug   3/4" NPT	F50672	Valve   3/8" Hose Barb X 3/8" Hose Barb
D6925	3/4 NPT x 1/2 NPT Reducer	F50679	Prewet Harness
D6928	Hose Barb   3/4 Male Barb   3/4 Male Thread	F50681	Relay Jumper
D6951	Nozzle Body   11/16"-16 UNM X 3/8" HB 90°	F50766	Manual
D6988-9	Hose   3/8" X 9" PVC Clear	F50845	Bolt   3/8"-16 x 1/2" Serr. Flange Hex
D6988-8	Hose   3/8" X 1" X 8" PVC Clear	T20131	Garden Hose Cap   3/4" Plastic
D6988-12	Hose   3/8" X 1" X 12" PVC Clear	T20136	Washer   Garden Hose

# Tank Assembly Parts Breakdown



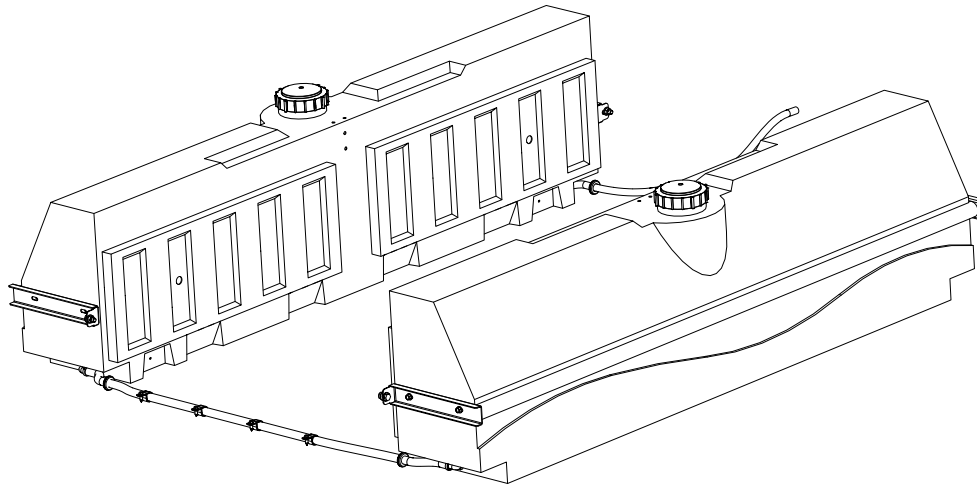
Model # PWX-200



# Tank Assembly Parts Breakdown



Model # PWX-200

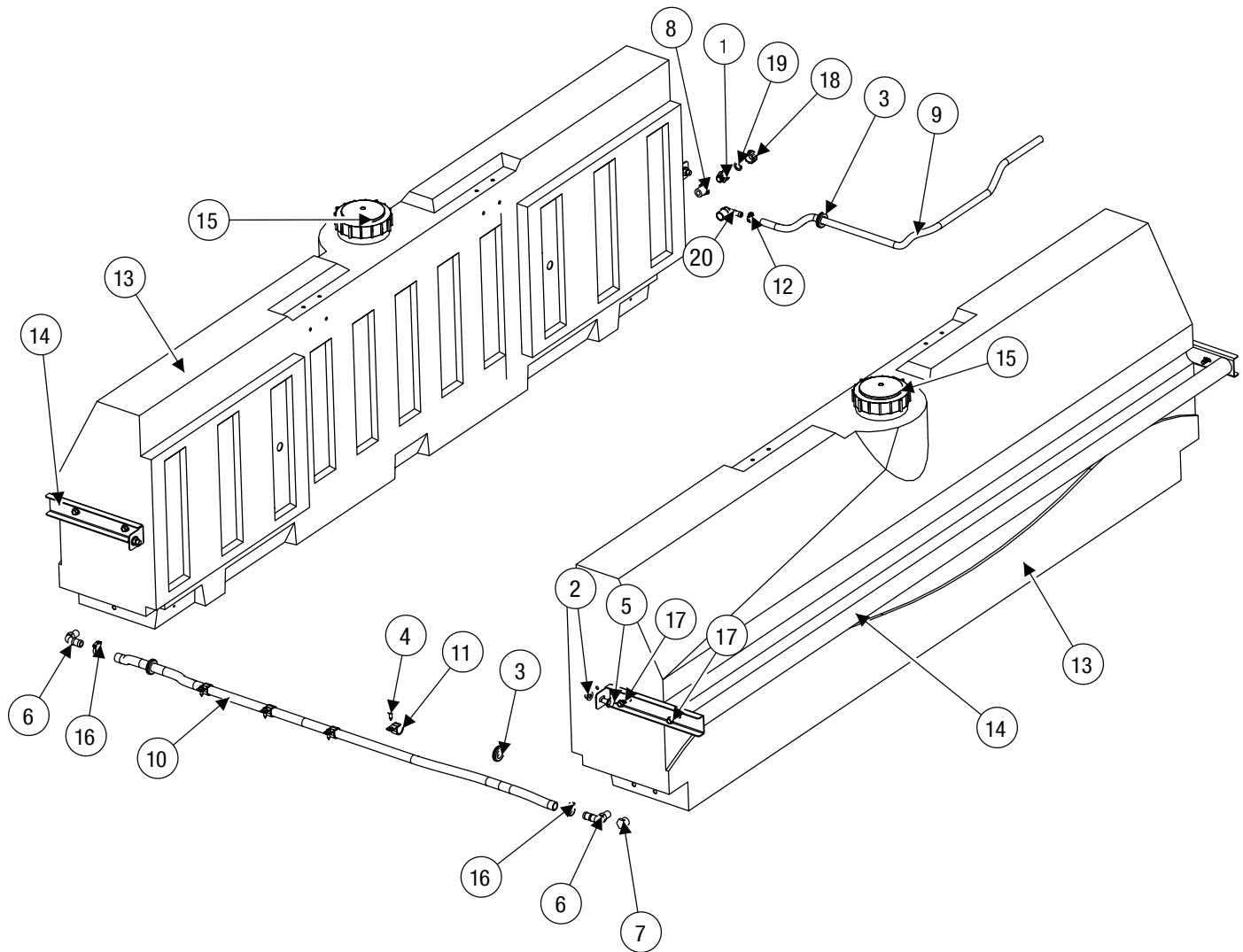


ID #	Part #	Description	Qty
1	D5357	Garden Hose - 1/2 NPT Adapter	1
2	D5535	Nut 1/2"-13 Serrated Flange Zinc	4
3	D5602	Hose Grommet	3
4	D6447	5/16" X 1" Driller Zinc	4
5	D6528	Bolt 1/2"-13 X 1" Serrated Hex Zinc	4
6	D6928	Hose Barb 1/4" Male Thread X 3/4" Straight	2
7	D6908	Pipe Plug 1/4" NPT	2
8	D6925	3/4 NPT x 1/2 NPT Reducer	1
9	D6989-42	Hose 1/2" X 42" PVC Clear	1
10	D6990-80	Hose 1/4" X 80" PVC Clear	1
11	D7220	Clamp 1" Rubber Coated	4
12	F50146	Hose Clamp 1 Double Tooth Poly 3/8"	1
13	F50251	Tank 100 Gallon Yellow	2
14	F50447	Tank Mounting Tube 1 PWX-200	2
15	F50487	6 Inch Lid With Vent Gasket	2
16	F50577	Hose Clamp 1/4" Double Tooth Poly	2
17	F50845	Bolt 3/8"-16 X 1/2" Serrated Flange Type F Zinc	8
18	T20131	Garden Hose Cap 1/4" Plastic	1
19	T20136	Washer 1 Garden Hose	1
20	D5255	Hose Barb 1/4" Male Thread X 1/2" Straight	1

# Tank Assemblies Breakdown



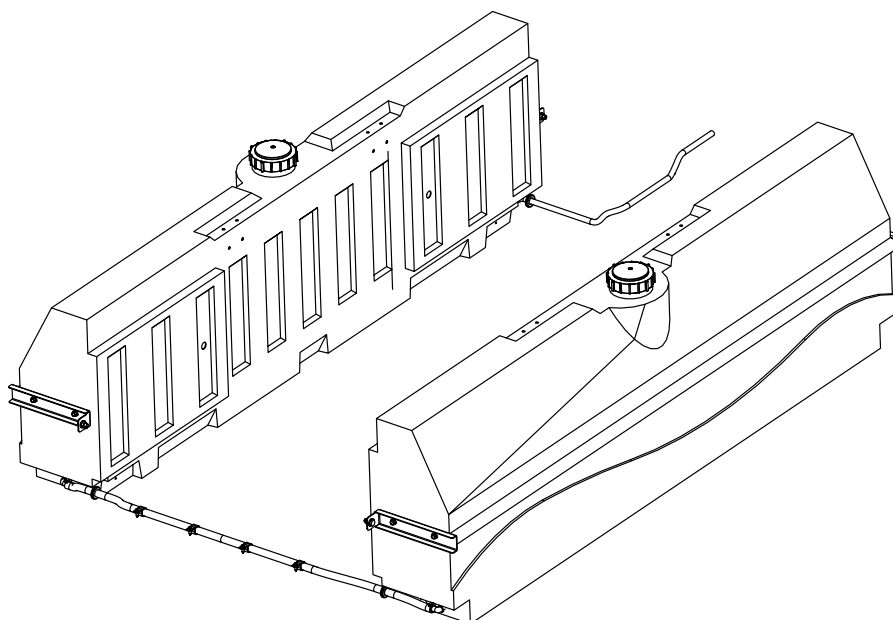
Model # PWX-250



# Tank Assemblies Breakdown



Model # PWX-250

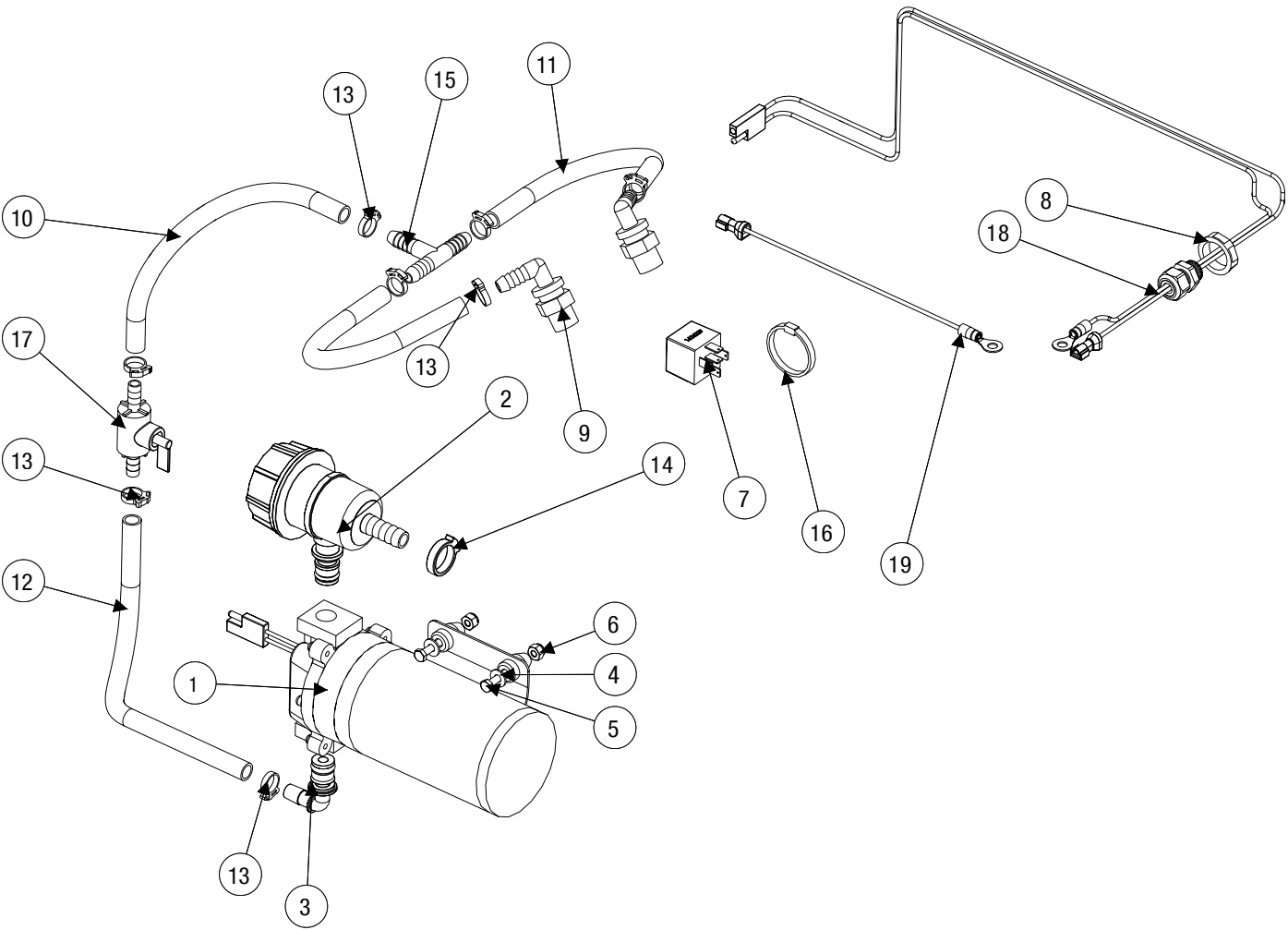


ID #	Part #	Description	Qty
1	D5357	Garden Hose - 1/2 NPT Adapter	1
2	D5535	Nut 1/2"-13 Serrated Flange Zinc	4
3	D5602	Hose Grommet	3
4	D6447	5/16" X 1" Driller Zinc	4
5	D6528	Bolt 1/2"-13 X 1" Serrated Hex Zinc	4
6	D6905	Hose Barb 1/4" Male Thread X 3/4" 90°	2
7	D6908	Pipe Plug 1/4" NPT	2
8	D6925	3/4 NPT x 1/2 NPT Reducer	1
9	D6989-45	Hose 1" X 45" PVC Clear	1
10	D6990-80	Hose 1/4" X 80" PVC Clear	1
11	D7220	Clamp 1" Rubber Coated	4
12	F50146	Hose Clamp 1 Double Tooth Poly 3/8"	1
13	F50261	Tank 1 Saddle 125 Gallon Yellow	2
14	F50406	Tank Mounting Tube 1 PWX-250	2
15	F50487	6 Inch Lid With Vent Gasket	2
16	F50577	Hose Clamp 1/4" Double Tooth Poly	2
17	F50845	Bolt 3/8"-16 X 1/2" Serrated Flange Type F Zinc	8
18	T20131	Garden Hose Cap 1/4" Plastic	1
19	T20136	Washer 1 Garden Hose	1
20	T20313	Hose Barb 1/4" Male Thread X 1/2" 90°	1

# Pump Assembly Parts Breakdown



Model # PWX-200 / PWX-250

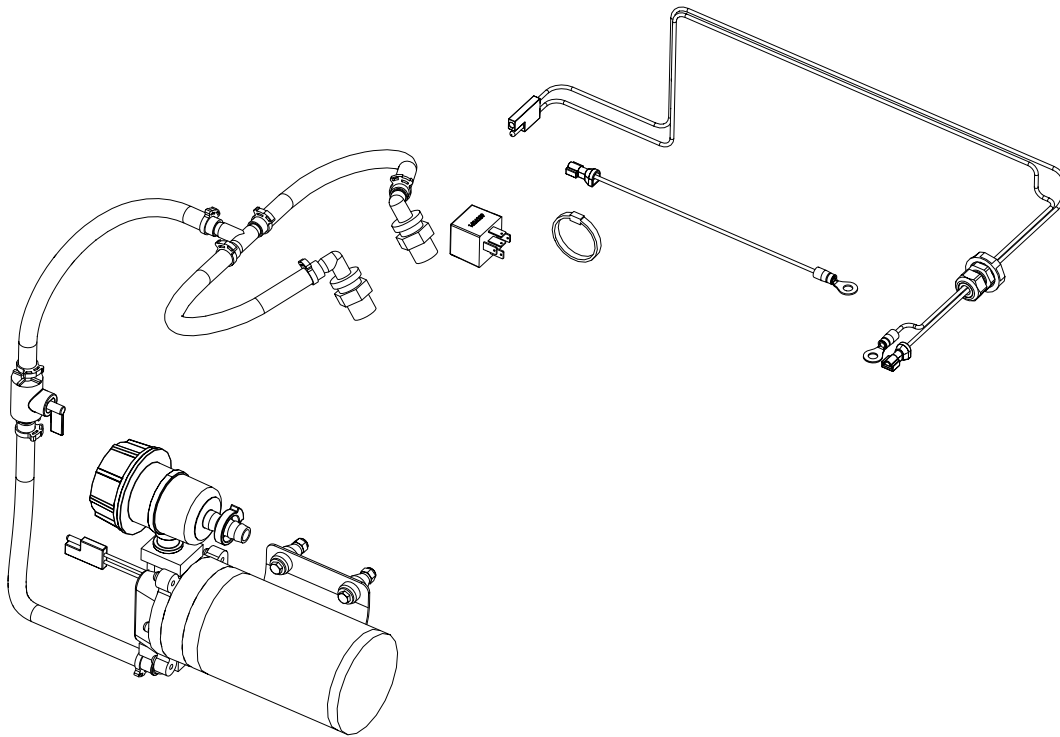




# Pump Assembly Parts Breakdown



Model # PWX-200 / PWX-250



ID #	Part #	Description	Qty
1	D5265	Pump	1
2	D5267	Line Strainer   Quick Attach	1
3	D5269	Hose Barb   5/8" Quick Attach X 3/8" 90°	1
4	D5292	Washer   #10 Flat Stainless	4
5	D5294	Bolt   #10-32 X 1-1/4" Hex Head MS Stainless	4
6	D5948	Nut   #10-32 Nylox Waxed Stainless	4
7	D6083	Relay   20 Amp	1
8	D6781	Nut   1/2" NPT Black Nylon	1
9	D6951	Nozzle Body   11/16"-16 UNM X 3/8" HB 90°	2
10	D6988-12	Hose   3/8" X 1" X 12" PVC Clear	1
11	D6988-8	Hose   3/8" X 1" X 8" PVC Clear	2
12	D6988-9	Hose   3/8" X 9" PVC Clear	1
13	F50145	Hose Clamp   3/8" Double Tooth Poly	8
14	F50146	Hose Clamp   Double Tooth Poly 3/8"	1
15	F50148	Hose Barb Tee   3/8"	1
16	F50202	Cable Tie   6" 30lb	1
17	F50672	Valve   3/8" Hose Barb X 3/8" Hose Barb	1
18	F50679	Pump Harness	1
19	F50681	Relay Jumper	1

[illegible]

This image shows a blank sheet of white paper with horizontal ruling lines. The lines are evenly spaced and run across the width of the page. There are no margins, text, or other markings on the paper.

