

## Mounting Instructions

---

**NOTE: Pay special attention when drilling or clamping dissimilar metals to aluminum bodies. Galvanic corrosion can occur if not handled properly. Contact vehicle manufacturer for recommended practices.**

---

### IN BED EXPRESS MOUNT

Step 1: Locate left and right side mounting rail **1** and **2**.

Step 2: Locate item **3** cross rails.

Step 3: Assemble item **1**, **2**, **3** together per exploded view. (Accessory Shim **25** may be needed for adjustment).

Step 4: Install rear latches items **5** and **6** with 5/8" thin lock nut **7**.

Step 5: Place frame assembly on truck and center left to right.

Step 6: Install items **4**, **8** & **9** per illustration. Note: on older models, you will have to drill out frame to accept item **8** stop bolt. To do this, you will need to bolt item **4** to lower frame rail using a drill template to locate the bracket, drill all four holes and then install items **4**, **8** & **9**.

Step 7: Determine front to back location by either placing spreader into locked position into frame assembly or by measuring using rear side frame holes and measuring to rear of pick up bed. Mark holes with paint marker or scribe. Verify that there are no critical components below the pick up bed such as a gas tank, etc.

Step 8: Drill holes and mount frame using supplied 5/8" hardware. Note: There are alternate holes for drilling around items that may be in the way.

### WHEEL KIT

Step 1: Assemble item **17** to item **16** using supplied hardware.

Step 2: Assemble items **20** to item **16** using supplied hardware.

Step 3: With spreader in truck, place item **21** wheel arm on the rear center of upper rail of hopper (see illustration/pictures).

Step 4: Place item **16** on auger weldment and trap the lower edge while at the same time positioning item **21** to engage item **20** so that item **15** pin with ring can keep the two assemblies together.

Step 5: Lock swivel wheels.

Step 6: Pull spreader back and off the in bed mount, allow spreader to rotate towards ground with the locked wheels touching first.

Step 7: Continue to pull spreader into a vertical position.

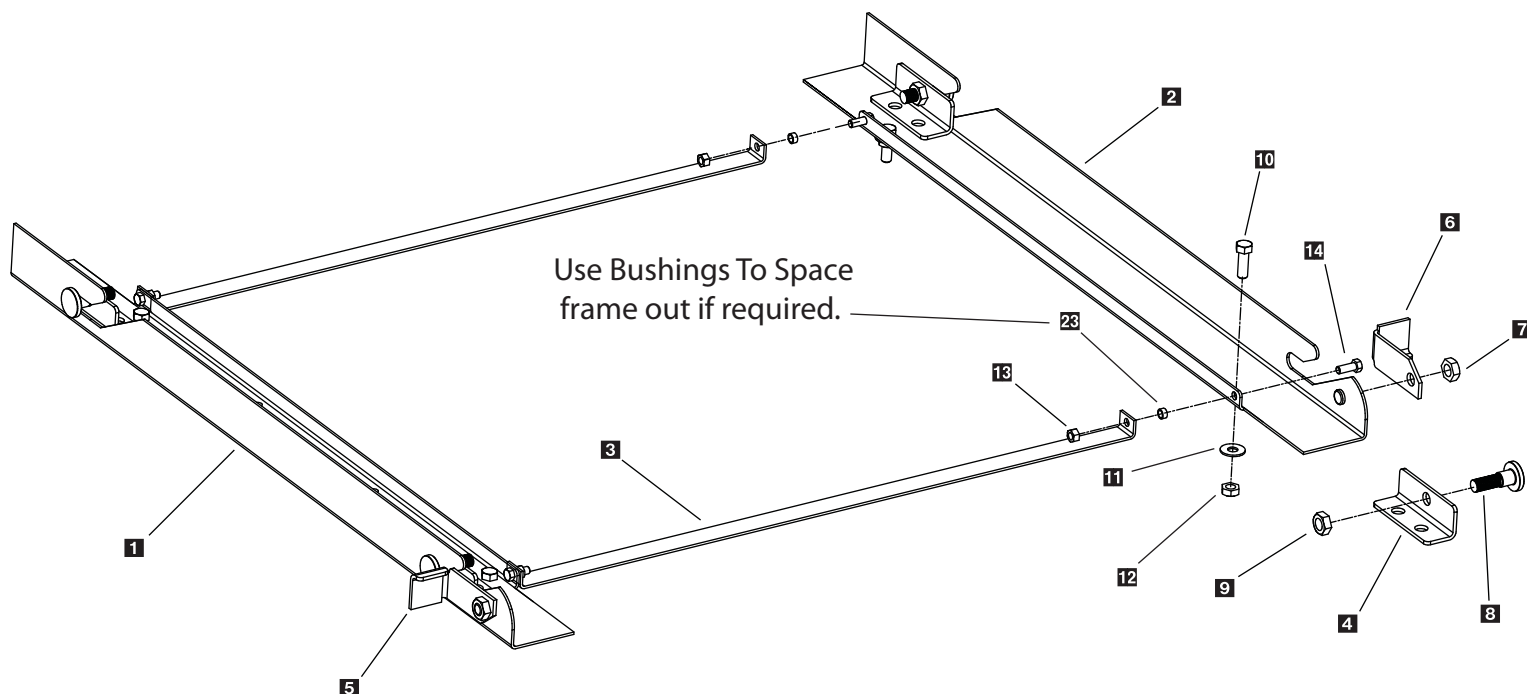
Step 8: When everything is stable, release wheel locks and slowly move spreader to storage location. Lock wheels when final place has been established.

Step 9: See photo and drawing illustrations for assembly and installation.

**Note: Ratchet straps must still be used as part of the mounting system.**

# XMT-275 Express Mount Kit

## Parts Breakdown



Key	Part No.	Description	Qty.
<b>1</b>	D 6590	Mounting Rail Left	1
<b>2</b>	D 6589	Mounting Rail Right	1
<b>3</b>	D 6591	Cross Rail	2
<b>4</b>	D 6595	Backing Plate	4
<b>5</b>	D 6593	Stop Latch Lt Side	1
<b>6</b>	D 6592	Stop Latch Rt Side	1
<b>7</b>	D 6573	5/8" Thin Lock Nut	2
<b>8</b>	D 6594	Special Stop Bolt	4
<b>9</b>	D 4127	5/8" Lock Nut	4
<b>10</b>	D 4116	1/2-13 x 1-1/2" Hex Bolt	8
<b>11</b>	D 6581	1/2" Fender Washer	8
<b>12</b>	D 4120	1/2" Lock Nut	8
<b>13</b>	D 4124	3/8-16 Lock Nut	5
<b>14</b>	D 4121	3/8-16 x 1" Hex Bolt	4
<b>15</b>	D 6572	Wheel Ball Pin	1
<b>16</b>	D 6567	Wheel Cross Bar	1
<b>17</b>	D 6570	Wheel Pivot w/Lock	2
<b>18</b>	D 6576	5/16-18 x 1-1/4" Hex Bolt	12
<b>19</b>	D 6138	5/16-18 Lock Nut	12
<b>20</b>	D 6568	Wheel Foot Holder	1
<b>21</b>	D 6569	Wheel Arm	1
<b>22</b>	D 6587	3/8-16 x 2-1/2 HHCS Bolt	1
<b>23</b>	D 5717	Nylon Spacer Bushing	4

