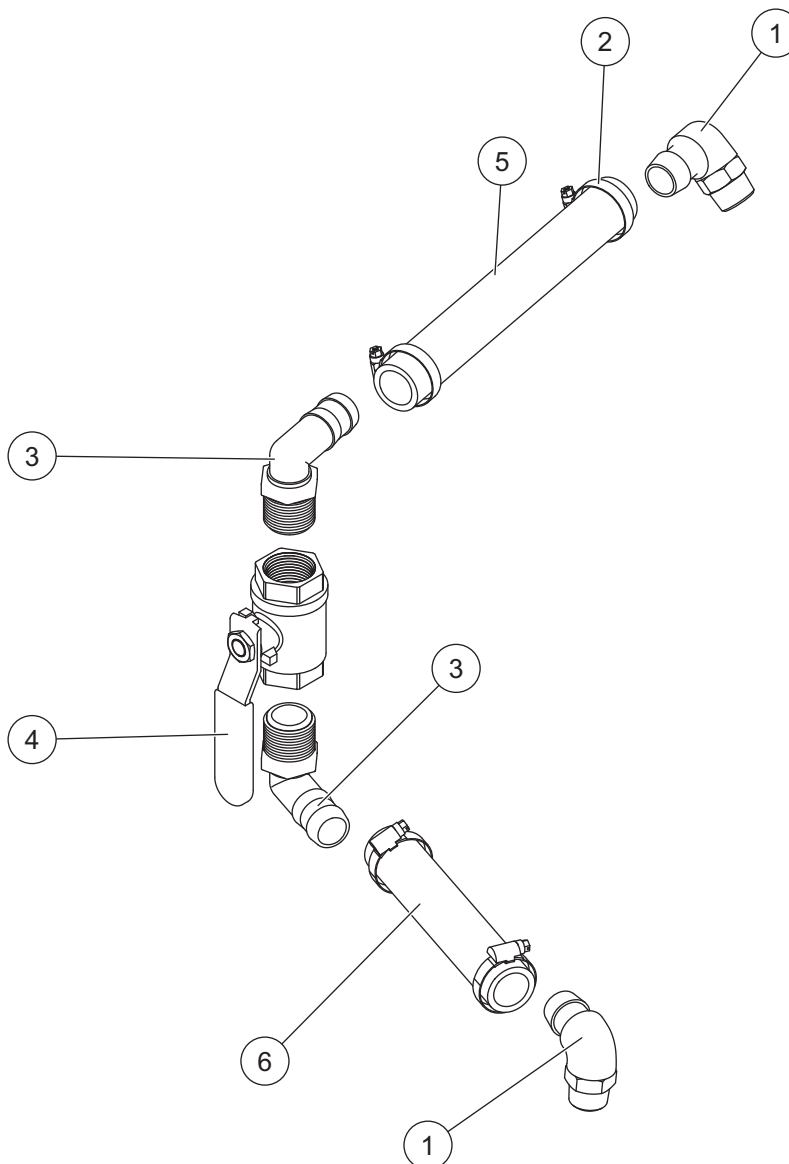


Spray Bar Plumbing Kit

Brine Pro™ Brine Maker

PARTS LIST



11268 Spray Bar Plumbing Kit							
Item	Part	Qty	Description	Item	Part	Qty	Description
1	76299	2	Elbow, 3/4 MNPT to 1" Barb	5	11829	1	1 x 10 PVC Clear Hose
2	D6963	4	11/16 x 1-1/2 Band Clamp	6	11828	1	1 x 7 PVC Clear Hose
3	99997	2	Elbow, 1 MNPT x 1 Hose Barb	ns	76370	1	Pipe Thread Sealant, 1.75 oz
4	11827	1	1" Brass Ball 2X FNPT Valve	ns		1	Cable Tie, 7"
ns = not shown				F = Female		M = Male	

INSTALLATION INSTRUCTIONS

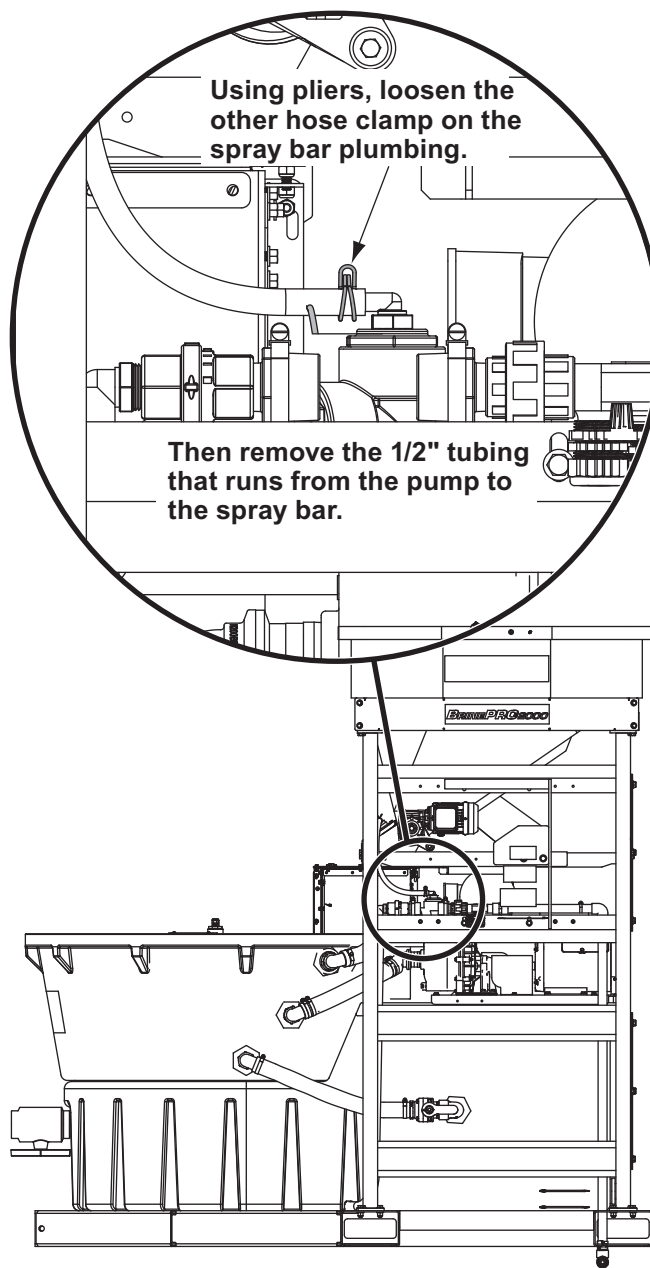
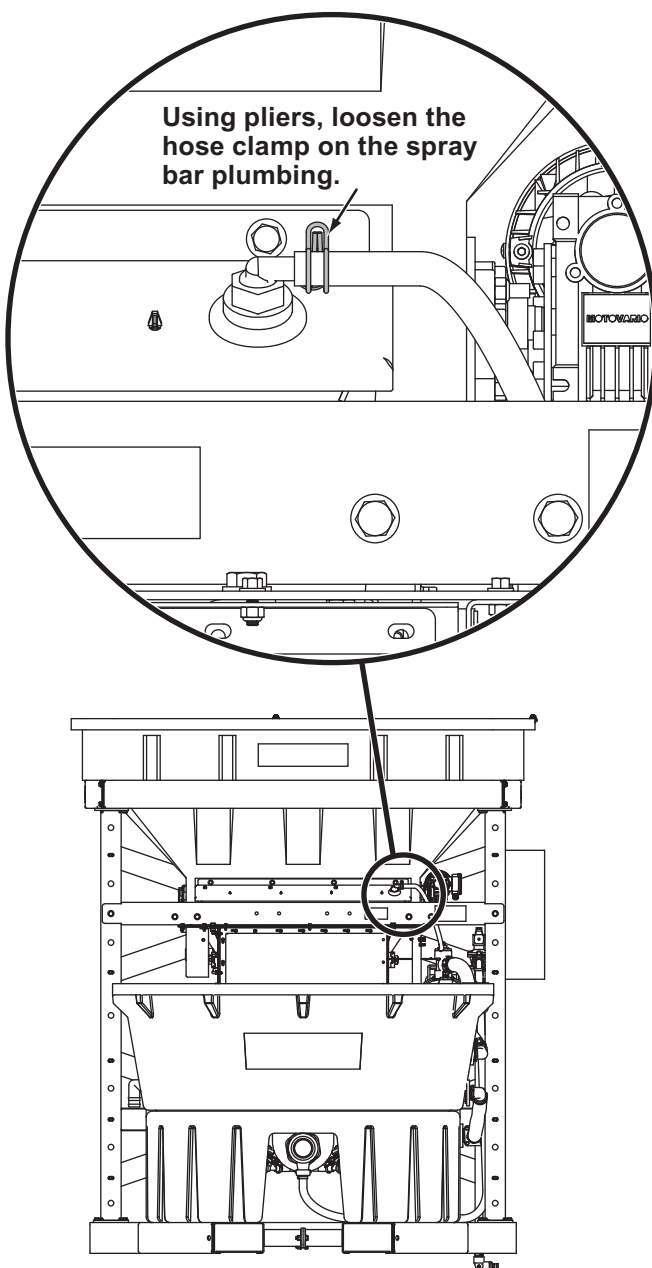
⚠ CAUTION

Read this document before installing the Spray Bar Plumbing Kit.

⚠ CAUTION

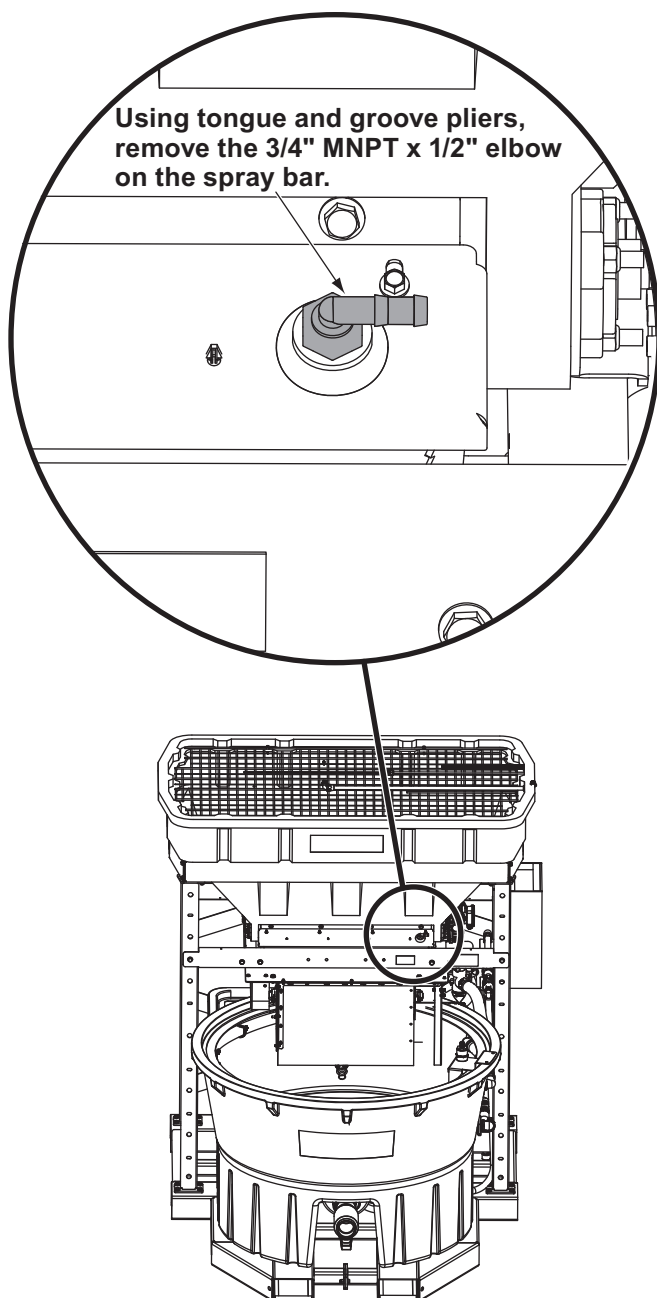
Use standard methods and practices when attaching and installing accessories, including proper personal protective safety equipment.

1. Turn OFF Brine Pro™ brine maker.
2. Always shut off and lock out the power source before servicing.
3. Using pliers, loosen the two hose clamps on the spray bar plumbing.
4. After the two hose clamps are loosened, remove the 1/2" tubing that runs from pump to spray bar.

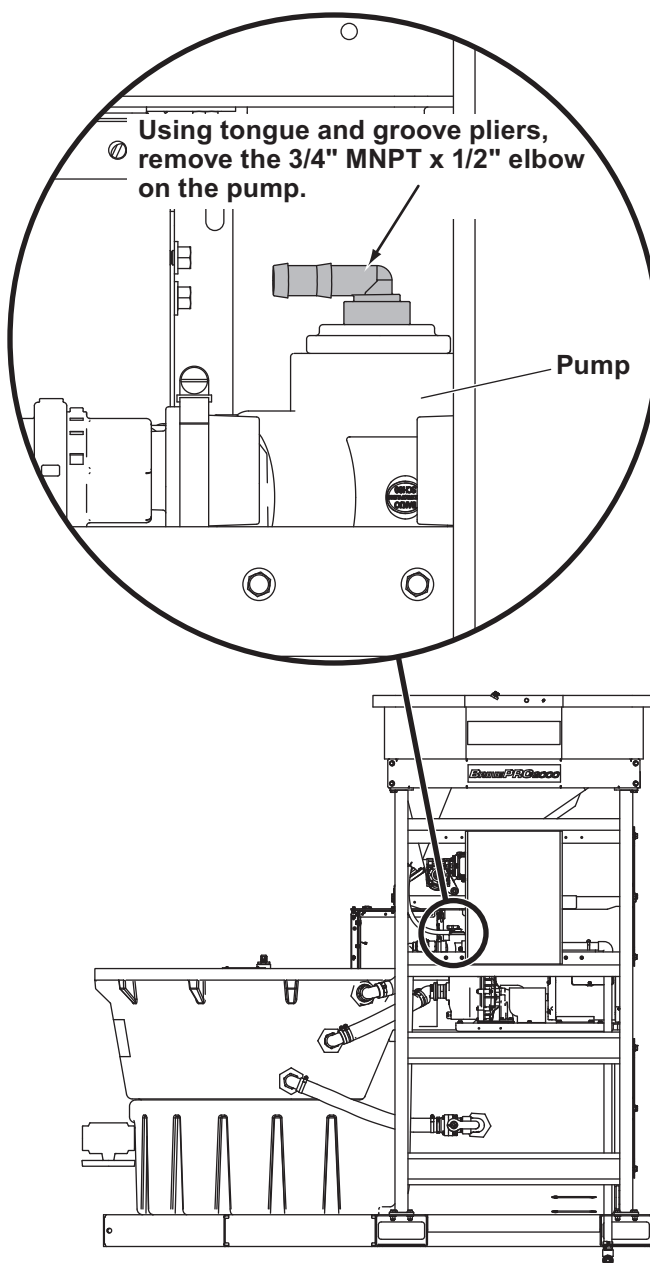


NOTE: When removing components, immobilize connecting parts to prevent breakage of other seals in the plumbing. This can be done by using two sets of tongue and groove pliers to stabilize mating parts. Failure to do so could result in brine leakage.

5. Using tongue and groove pliers, remove the 3/4" MNPT x 1/2" elbow on the spray bar. See note. Set elbow aside.



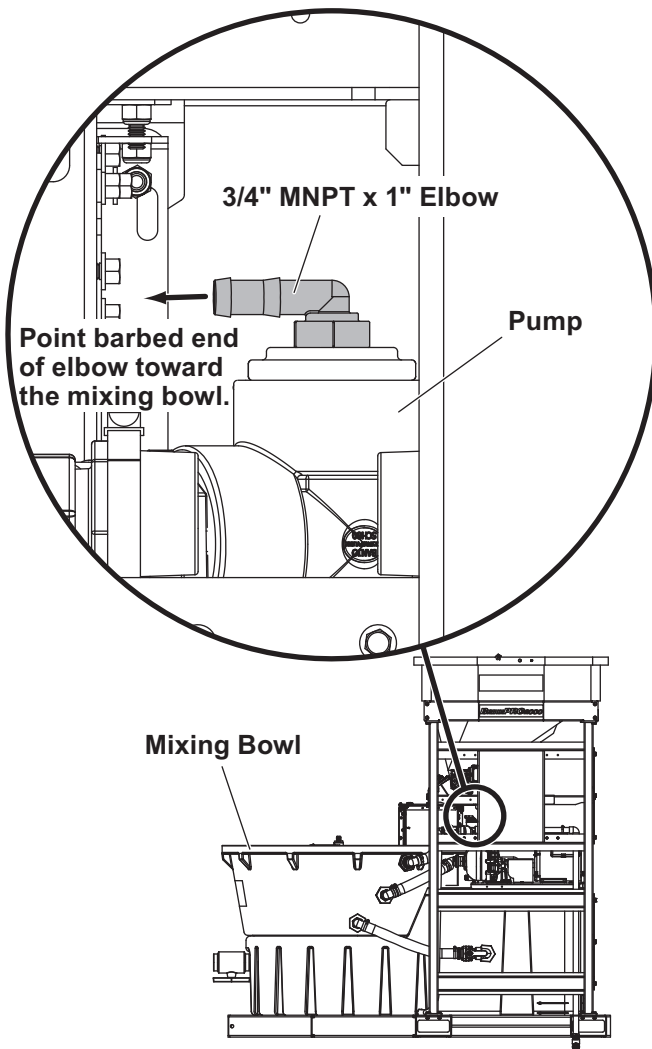
6. Using tongue and groove pliers, remove the 3/4" MNPT x 1/2" elbow on the pump. See note. Set elbow aside.



7. Apply thread sealant to the threaded end of one 3/4" MNPT x 1" elbow and attach to the pump.

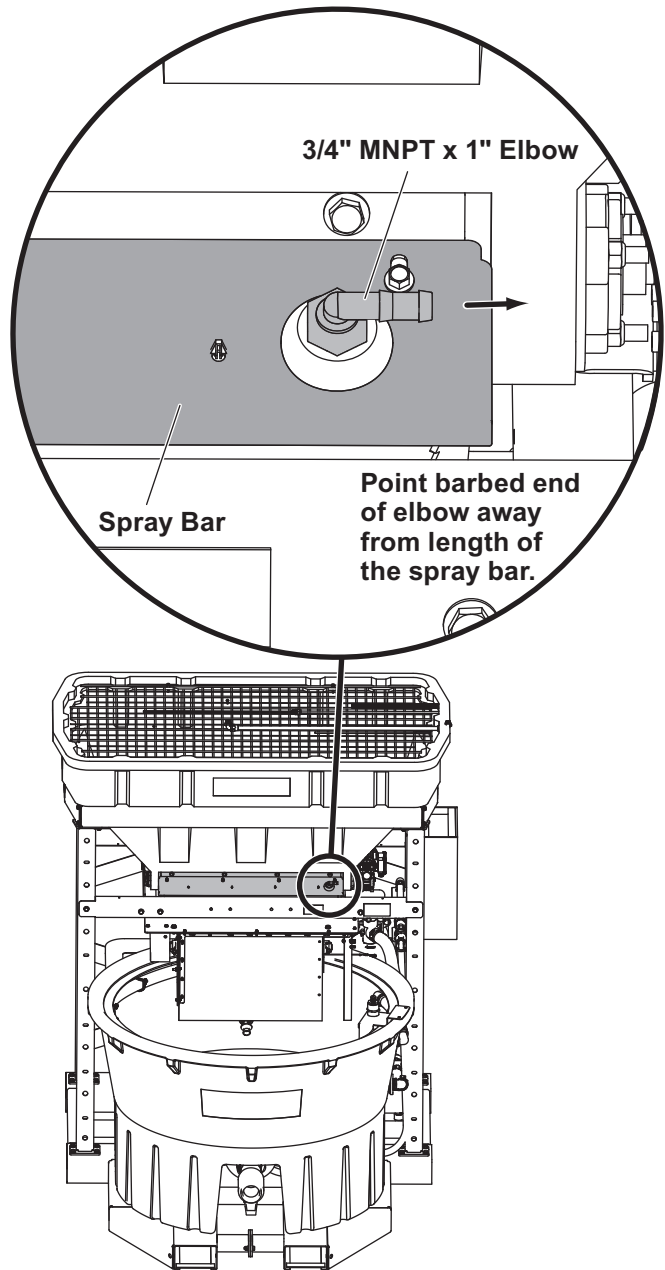
NOTE: Be sure not to overtighten plastic fittings. Excessive force will crack the plastic fittings and make them unusable.

8. Using tongue and groove pliers, tighten until snug, ensuring that the barbed end of the elbow points toward the Brine Pro™ mixing bowl as shown below.

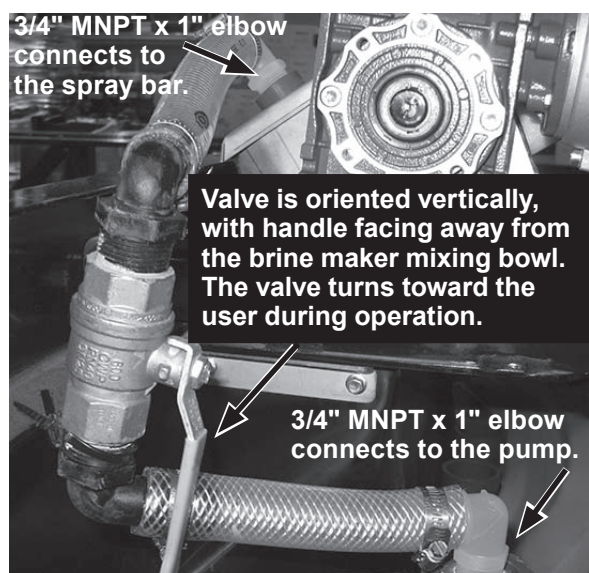


9. Connect one end of the 1" x 7" PVC hose to the barbed end of the 3/4" MNPT x 1" elbow that is attached to the pump so the hose completely covers the barb. Slide a hose clamp over the hose to the middle of the barb. Use a 5/16" nut driver to tighten until the hose can no longer rotate freely.

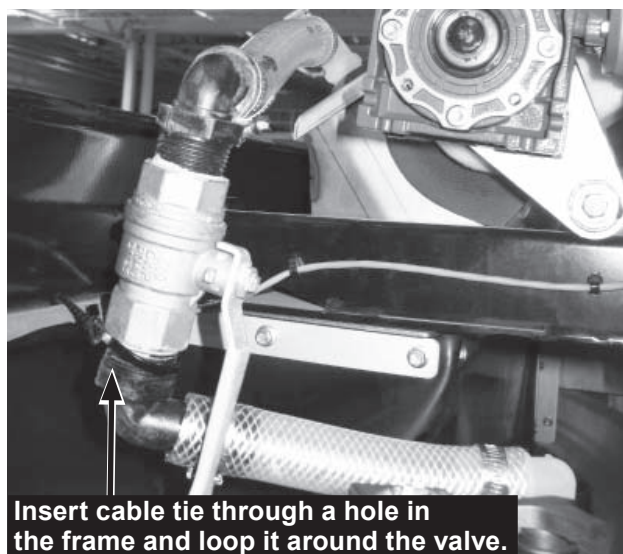
10. Apply thread sealant to the thread of the second 3/4" MNPT x 1" elbow. Attach the elbow to the inlet of the spray bar. Using tongue and groove pliers, tighten until snug, ensuring that the barbed end of the elbow faces away from the length of the spray bar.



11. Apply thread sealant to the threads of the two 1" MNPT x 1" elbows and attach to the ball valve.
12. Position the valve lengthwise vertically so that the lever turns away from the bulk of the Brine Pro brine maker, as shown on the following page.

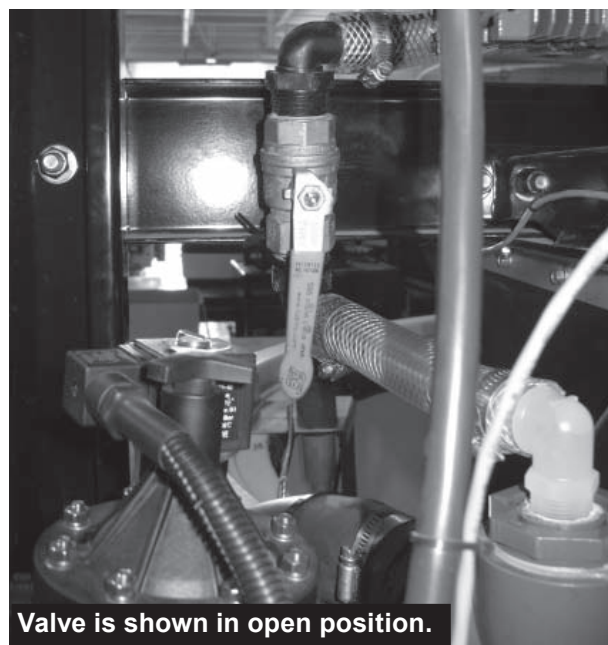


13. The elbow on the bottom of the valve should point rearward to the pump. The elbow on top should point inward toward the spray bar.
14. Slide a hose clamp onto the 1" x 7" PVC hose and attach PVC hose to the barb on the bottom of the valve so that the hose completely covers the barb. Move the hose clamp over the middle of the barb and tighten with a 5/16" nut driver until the hose cannot rotate freely.
15. Insert the cable tie through the hole on the frame of the brine maker and around the base of the valve. Tighten cable tie until the valve does not move freely.



16. Slide two hose clamps onto the 1" x 10" PVC hose.

17. Connect the hose to the 1" MNPT x 1" elbow that is attached to the valve. Connect the other end of the hose to the 3/4" MNPT x 1" elbow that is attached to the spray bar. Make sure that the hose completely covers the barbs.
18. Move the hose clamps over the hose to the middle of the barb and use a 5/16" nut driver to tighten until the hose cannot rotate freely.
19. Check the connections for leaks when first operating the spray bar.



OPERATING INSTRUCTIONS

1. The addition of the valve allows the user to control the flow rate to the spray bar. High spray bar flow rates may reduce the rate of brine production. The valve allows the user to find an appropriate balance. If you are experiencing clogging during operation of the hammer mill, opening the valve to increase brine flow may reduce clogging.
2. Turning off the spray bar while the brine maker is operating can result in salt build-up in the hammer mill, causing it to jam.
3. If dry operation is desired, the brine maker should be turned OFF, **the spray bar valve closed**, and the brine maker operated in hammer mill wash mode for 3–5 minutes.
4. If a clog of a spray bar hole occurs, cycling the valve ON and OFF with the pump running may break the clog free.

Copyright © 2017 Douglas Dynamics, LLC. All rights reserved. This material may not be reproduced or copied, in whole or in part, in any printed, mechanical, electronic, film, or other distribution and storage media, without the written consent of TrynEx International, LLC. Authorization to photocopy items for internal or personal use by TrynEx International outlets or brine maker owner is granted.

TrynEx International reserves the right under its product improvement policy to change construction or design details and furnish equipment when so altered without reference to illustrations or specifications used. TrynEx International may require or recommend optional equipment for brine making. TrynEx International offers a limited warranty for brine maker and accessories. See separately printed page for this important information. The following are registered (®) or unregistered (™) trademarks of Douglas Dynamics, LLC: Brine Pro™, SnowEx®.

Printed in U.S.A.